

Site Conditions

ECT Phase 1 (BEA)

EPA Expanded Site Inspection

EPA Hazard Ranking System Document

Risk and Criteria

- What is substance?
 - What are the pathways of exposure?
 - Who or what could be exposed?
 - How can the exposure route be controlled?
 - What is the criteria – default or site specific risk assessment
-
- Substance X - Contaminated soil
 - Direct contact threat
 - Workers on the site that could be exposed
 - Stay out of that area and put up a fence, remove the soil, cap the soil
 - Default non-residential direct contact criteria or risk assessment

Phase 1

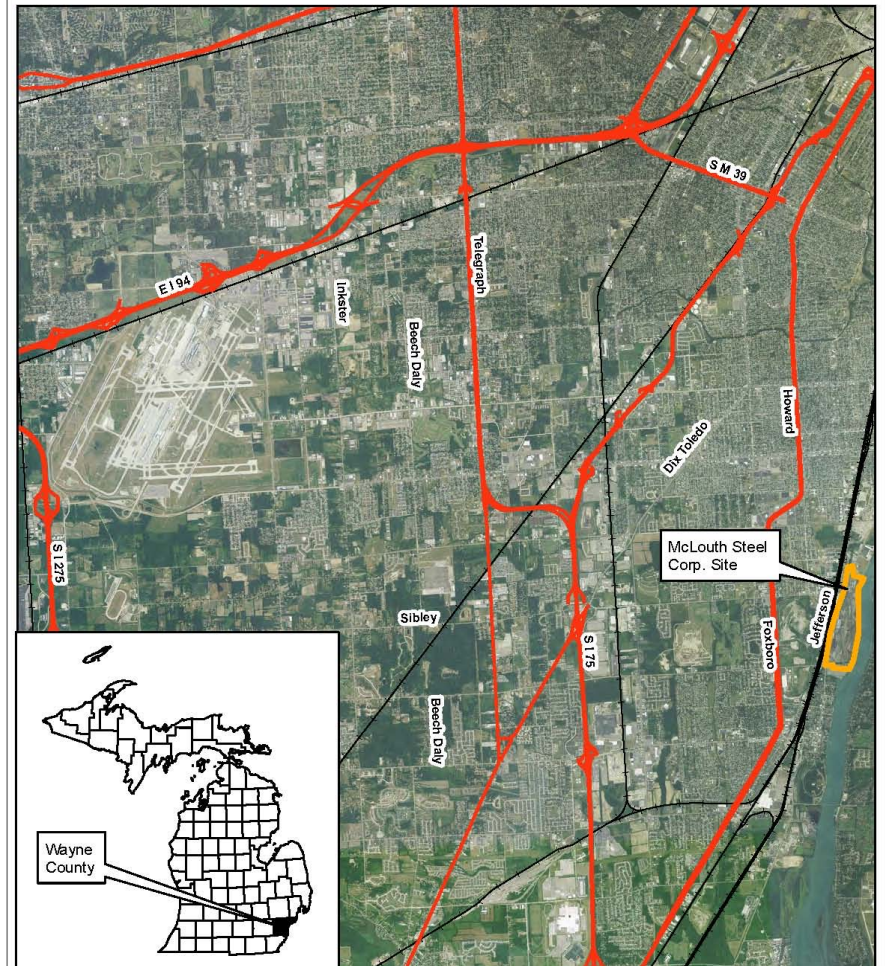
ETC for MSC. August 8, 2017

- 134 Recognized Environmental Conditions (RECs) divided into 5 areas
- Drums, transformers, pits, lagoons, asbestos pipe wrap, floor staining, ASTs, oily water in flooded basements, pickle liquor, PCBs in soil, pH plumes, dioxin in soil and river sediments.
- Many of these items are being addressed by the work MSC is doing.
 - May not be fully addressed - soils, sediments, and groundwater

Expanded Site Inspection Report 2017

Fieldwork 2015

FIGURE 1
SITE LOCATION



McLouth Steel Corp
1491 West Jefferson Avenue
Trenton, MI 48183
U.S. EPA ID No.: MID017422304

- Legend**
- Railroad
 - Site Boundary
 - State Roads

0 1 2 4 Miles

Compiled by: Leni Steiner-Zehender
December 2015
Created with ArcMap 10.3.1
Sources: Michigan Geographic Data Library & MSU RS&GIS 2012 Aerial

Limited Investigation

Waste Piles 7
Surface Soils 13
Soil Borings 10
Groundwater 10
Surface water 4
Sediment 15

FIGURE 2
SITE FEATURES



McLouth Steel Corp
1491 West Jefferson Avenue
Trenton, MI 48183
U.S. EPA ID No.: MID017422304

Legend

- Site Boundary
- Rivers & Streams
- Railroad



0 750 1,500 3,000 Feet

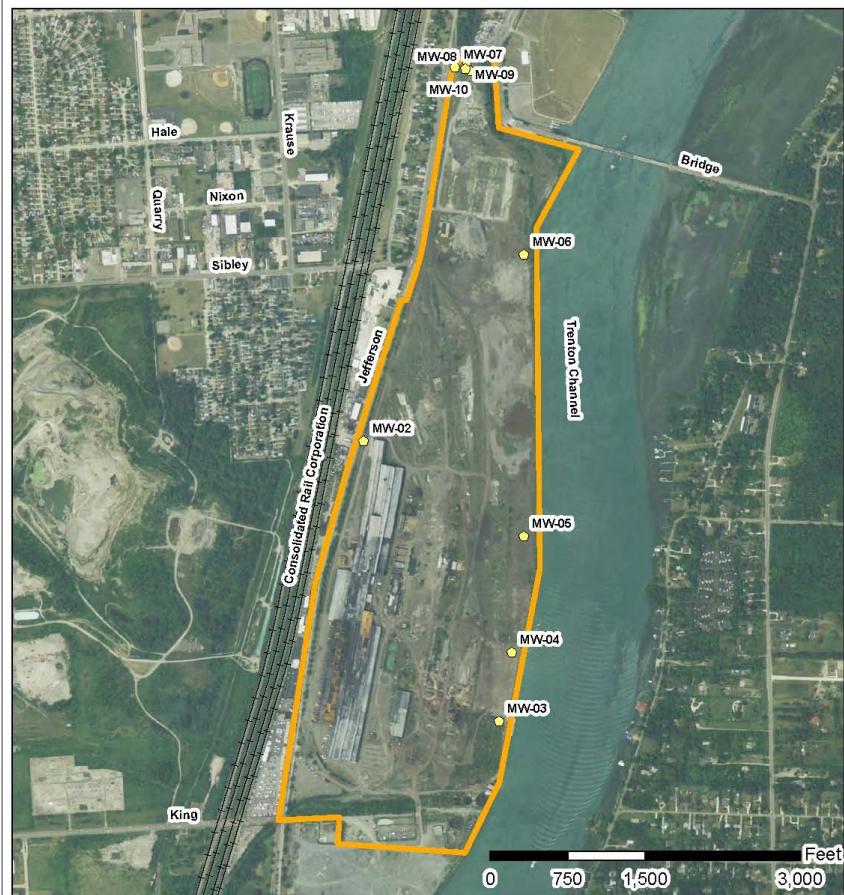
Compiled by: Leni Steiner-Zehender
December 2016
Created with ArcMap 10.3.1
Sources: Michigan Geographic Data Library & MSU RS&GIS 2012 Aerial

Groundwater Table 13

VOCs
SVOCs
Pesticide
Inorganics

pH 0.85 -12.69

FIGURE 6
MONITORING WELL SAMPLING LOCATIONS



McLouth Steel Corp
1491 West Jefferson Avenue
Trenton, MI 48183
U.S. EPA ID No.: MID017422304

Compiled by: Leni Steiner-Zehender
October 2016
Created with ArcMap 10.3.1
Sources: Michigan Geographic Data Library &
MSU RS&GIS 2012 Aerial



Legend

- MW-07 - Existing Monitoring Well 07
- Site Boundary
- +— Railroad

pH - potential of hydrogen (hydrogen concentration)

Scale 0-14.

7 is neutral

< pH is acidic

> pH is basic

logarithmic - a change of 1 is ten times more acidic or basic

McLouth Range (BEA)

0.85 to 12.69



Stomach Acid
Lemon juice

1

2

Vinegar

3



Soft drinks
Tomatoes
Carrots
Normal rain

4

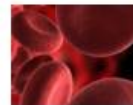
5

6



Milk

7



Human blood
Egg whites

8

Baking Soda

9

Ammonia

10

11



Bleach

12

Lye

13

14

All fish die



Caddis and Mayflies die
Salmon eggs and alevin die



Bass and trout begin to die

Milk Snails and tadpoles begin to die

Optimum for most fish

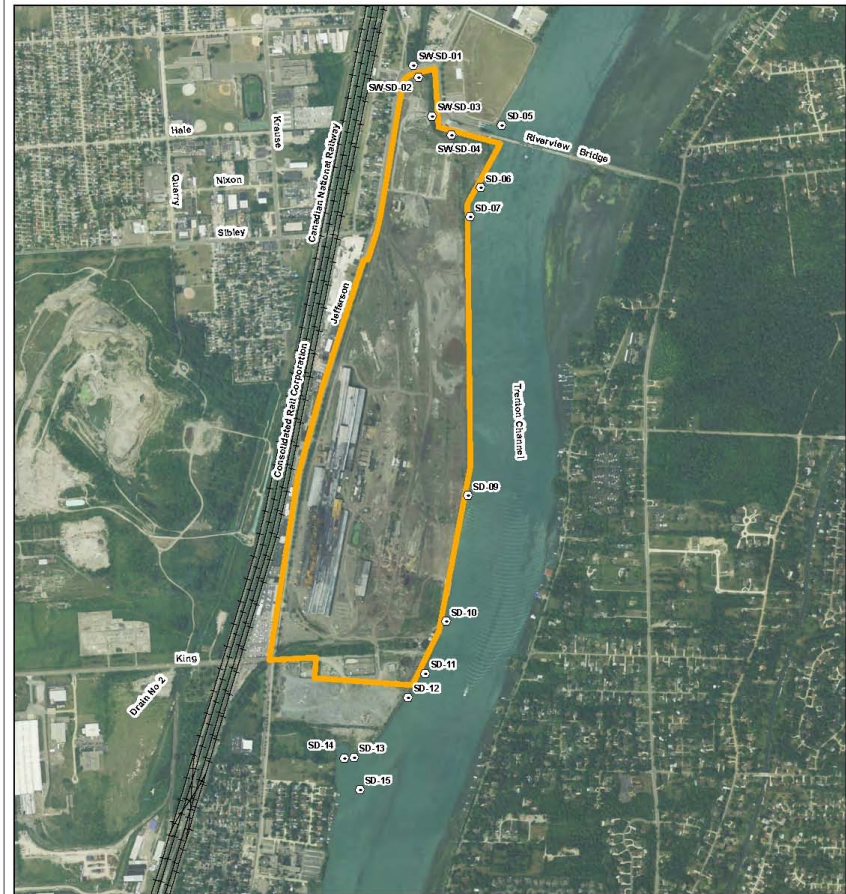


All fish die



Surface water
Table 14
no detections

FIGURE 7
SURFACE WATER & SEDIMENT SAMPLING LOCATIONS



McLouth Steel Corp
1491 West Jefferson Avenue
Trenton, MI 48183
U.S. EPA ID No.: MID017422304



0 1,150 2,300 4,600 Feet

Legend

- SW-01 - Surface Water Sample 01
- SD-01 - Sediment Sample 01
- Railroad
- Site Boundary

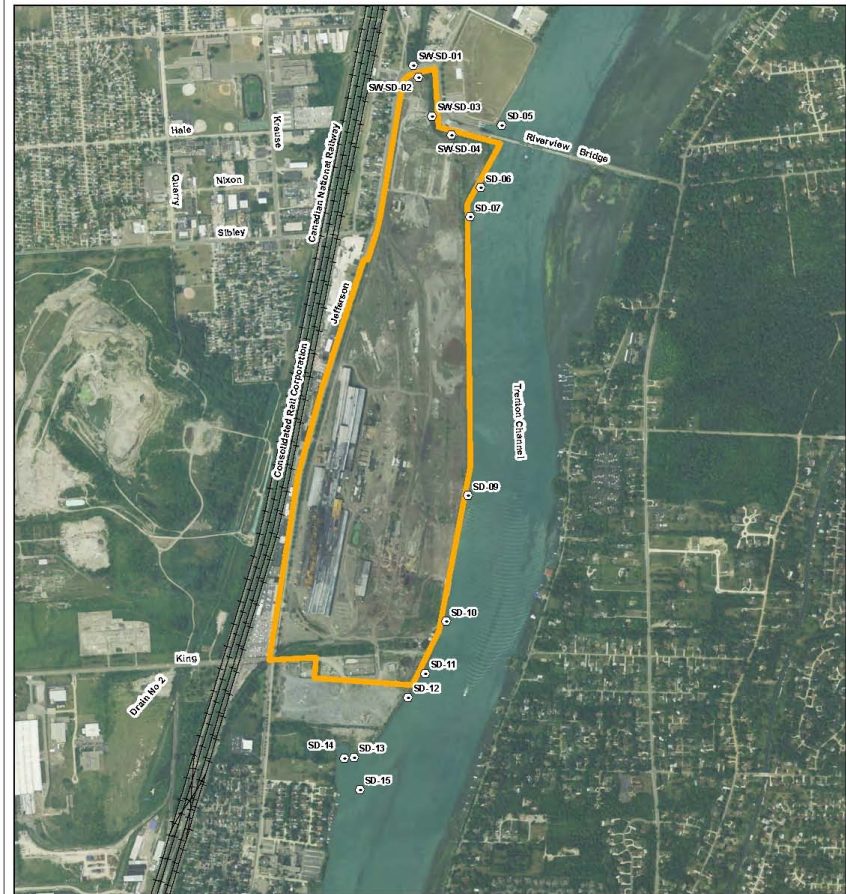
Compiled by: Leni Steiner-Zehender
December 2015
Created with ArcMap 10.3.1
Sources: Michigan Geographic Data Library &
MSU RS&GIS 2012 Aerial

Monguagon Creek Sediments

Table 15

Pesticide/PCBs
Inorganics

FIGURE 7
SURFACE WATER & SEDIMENT SAMPLING LOCATIONS



McLouth Steel Corp
1491 West Jefferson Avenue
Trenton, MI 48183
U.S. EPA ID No.: MID017422304



Legend

- SW-01 - Surface Water Sample 01
- SD-01 - Sediment Sample 01
- Railroad
- Site Boundary

0 1,150 2,300 4,600 Feet

Compiled by: Leni Steiner-Zehender
December 2015
Created with ArcMap 10.3.1
Sources: Michigan Geographic Data Library &
MSU RS&GIS 2012 Aerial

River Sediments

Table 15

VOCs

SVOCs

Pesticide/PCBs

Dioxins/Furans

Inorganics

FIGURE 7
SURFACE WATER & SEDIMENT SAMPLING LOCATIONS



McLouth Steel Corp
1491 West Jefferson Avenue
Trenton, MI 48183
U.S. EPA ID No.: MID017422304



Legend

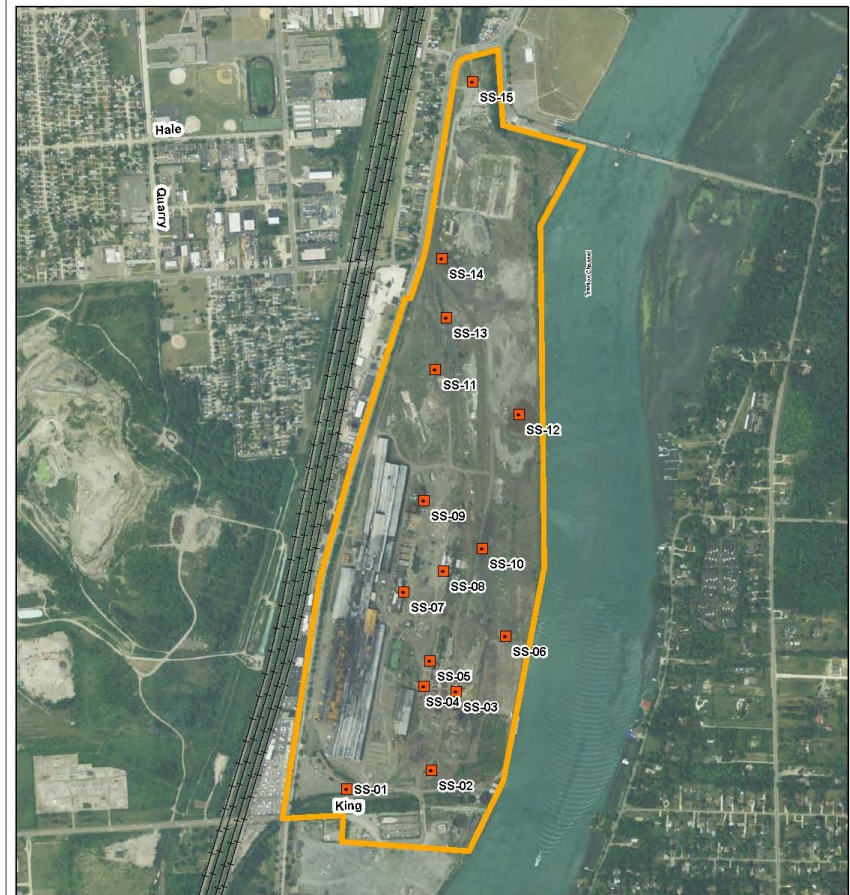
- SW-01 - Surface Water Sample 01
- SD-01 - Sediment Sample 01
- Railroad
- Site Boundary

Compiled by: Leni Steiner-Zehender
December 2015
Created with ArcMap 10.3.1
Sources: Michigan Geographic Data Library &
MSU RS&GIS 2012 Aerial

Surface Soil Table 16

VOCs
SVOCs
Pesticide
Dioxins/Furans
Inorganics

FIGURE 4
SURFICIAL SOIL SAMPLING LOCATIONS



McLouth Steel Corp
1491 West Jefferson Avenue
Trenton, MI 48183
U.S. EPA ID No.: MID017422304



Legend

- SS-01 - Surficial Soil Sample 01
- Site Boundary
- Railroad

0 0.1 0.2 Miles

Compiled by: Leni Steiner-Zehender
October 2016
Created with ArcMap 10.3.1
Sources: Michigan Geographic Data
Library & MSU RS&GIS 2012 Aerial

Soil Borings Table 17

VOCs
SVOCs
Pesticide/PCBs
Inorganics

FIGURE 5
SOIL BORING SAMPLING LOCATIONS



McLouth Steel Corp
1491 West Jefferson Avenue
Trenton, MI 48183
U.S. EPA ID No.: MID017422304



Legend

- SB-01 - Soil Boring 01
- Site Boundary
- + + Railroad

Compiled by: Leni Steiner-Zehender
December 2015
Created with ArcMap 10.3.1
Sources: Michigan Geographic Data Library &
MSU RS&GIS 2012 Aerial

Waste Samples Table 7

VOCs
SVOCs
Pesticide/PCBs
Inorganics

FIGURE 3
WASTE SAMPLING LOCATIONS



McLouth Steel Corp
1491 West Jefferson Avenue
Trenton, MI 48183
U.S. EPA ID No.: MID017422304



Legend

- W-01 - Waste Sample 01
- Site Boundary
- +— Railroad

Miles
0 0.1 0.2

Compiled by: Leni Steiner-Zehender
October 2016
Created with ArcMap 10.3.1
Sources: Michigan Geographic Data
Library & MSU RS&GIS 2012 Aerial

What was
learned. How
did it Score.

Ground Water Pathway - Not Evaluated

Surface Water Pathway - 100.00

Soil Exposure and Subsurface Intrusion
Pathway - Not Evaluated

Air Pathway - Not Evaluated

PCBs, dioxins and furans, metals, cyanide

The primary targets evaluated in the surface water migration pathway are fisheries and protected species and sensitive environments in the Trenton Channel of the Detroit River adjacent to the facility

Current work connection with Listing