



McLouth Steel RI/FS Update

Community Advisory Group Meeting

November 9, 2023



Christopher Vandegrift, Project Manager, CDM Smith

Nilia Moberly Green, Remedial Project Manager, USEPA



Remedial Investigation / Feasibility Study (RI/FS)- review

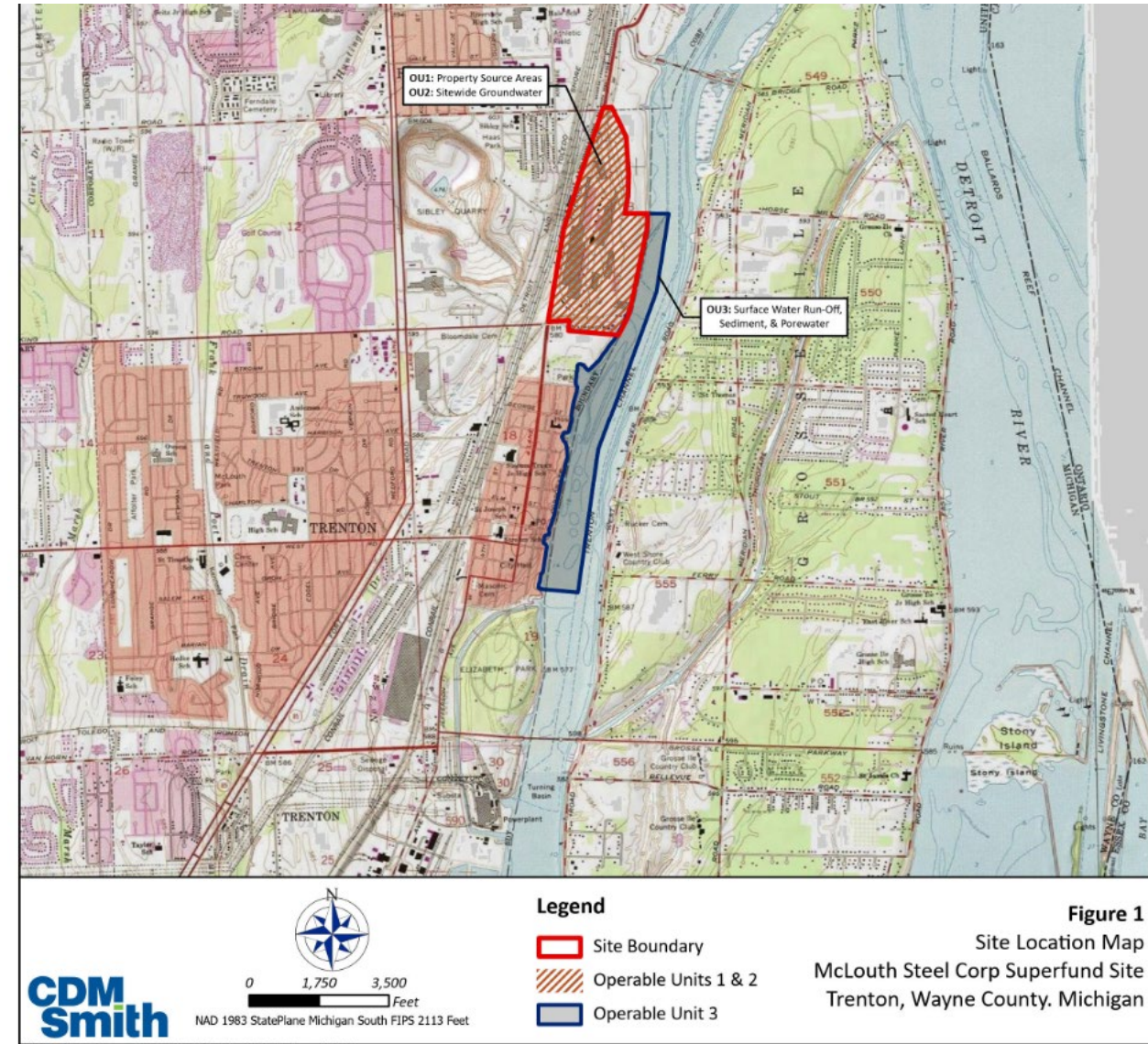
- A Remedial Investigation is being performed to collect information on the nature and extent of contamination at the former steel plant property.
- The goals of the RI are two-fold:
 - to provide enough detail to assess the risks posed by the site to human health and the environment, and
 - to enable evaluation of potential and appropriate remedial measures in the Feasibility Study .



McLouth Steel

Southern Portion – Three Operable Units

- Operable Unit 1 (OU1) – Source Areas
 - Releases to the land, fill materials, steel plant slag, etc.
- Operable Unit 2 (OU2) – Groundwater
 - Impacts to groundwater, assessment of site hydrogeology, evaluation groundwater discharge
- Operable Unit 3 (OU3) – Trenton Channel
 - Groundwater discharge to surface water, impacts to sediment and porewater



Southern Portion – Work Completed

- ✓ Review and compilation of prior investigations
- ✓ Site reconnaissance and assessment of existing monitoring wells
- ✓ Drone surveys
- ✓ Geophysical surveys and utility clearance
- ✓ Soil borings, monitoring well installations, well development
- ✓ Soil sampling for chemical laboratory analysis
- ✓ Surface water and sediment sampling
- Groundwater sampling – November 2023

Top image: installing bollards to protect new monitoring wells

Bottom image: well redevelopment



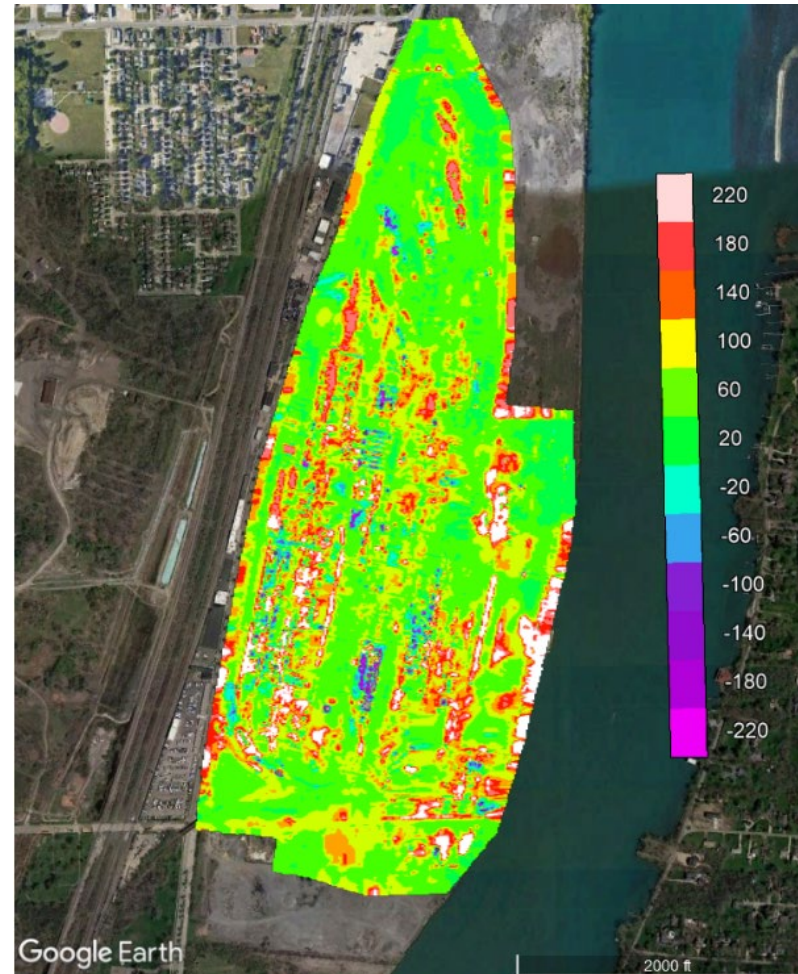
Sitewide Electromagnetic Geophysical Survey –

Historic Photo



2002

Terrain Conductivity (TC)



TC Anomalies



Recently Completed – OU3

■ Sediment Sampling

- 23 locations, surface samples (0-0.5') by Ponar dredge and collection of core via by Mudpuppy and vibracore
- Core sample depths 0-1', 1-2', 2-3', 3-5', every two feet thereafter to native clay or refusal
- 6 locations for geotechnical sample collection
- 44 Sediment samples were collected from various depth intervals

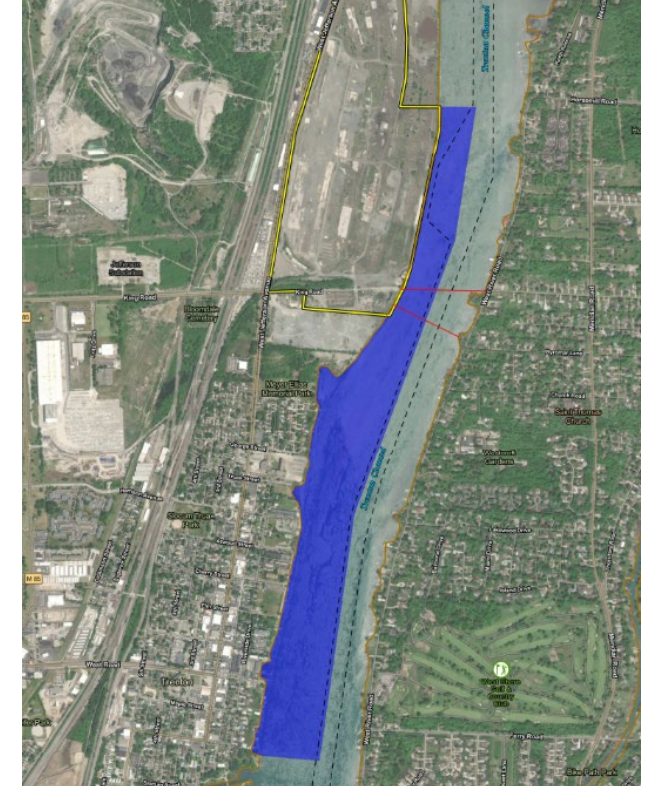
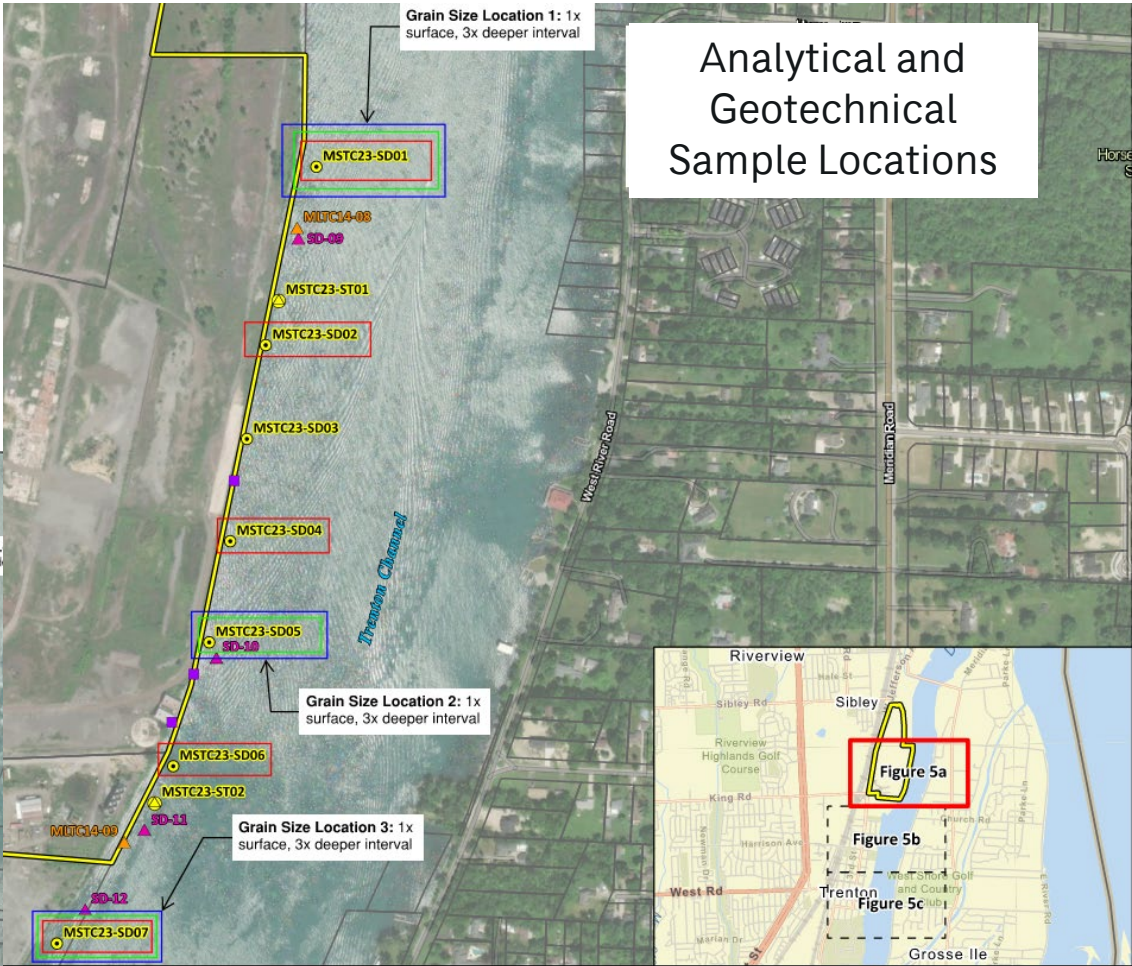
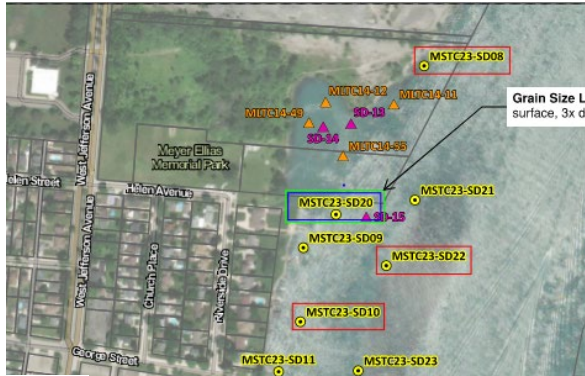


Image of one of EPA's "Mudpuppy" sampling vessel and the areal extent of OU3

OU3 Sampling Locations



Analytical and Geotechnical Sample Locations



Sediment Sampling



■ EPA's Mudpuppy

A Ponar Dredge

■ Vibracore sediment collection in Lexan tubes



Trenton River Channel Sediment above Native Clay



Sample Preparation

OU3 – WORK TO BE COMPLETED

- Sediment Trap Sampling
 - Deployment –November 2023
 - Retrieval - December 2023/January 2024
- Surface Water Sampling
 - November/December 2023-weather dependent
- Bathymetric Surveying
 - December 2023
- Sediment and surface water laboratory analysis
 - 44 sediment, up to 10 surface water, and 4 sediment trap samples



Images of sediment traps and deployment/retrieval operations.

What's Next – General Schedule

- Fall / Winter 2023 – Completion of Year 1 OU1/OU2 & OU3 Field Work
- 1st Quarter 2024 – Evaluation of OU1/OU2/OU3 Field and Laboratory Data
- 2nd Quarter 2024 – Draft Technical Memorandum to EPA
- Spring / Summer 2024 - Year 2 Field Work
- Fall 2024 – Completion Remedial Investigation and Risk Assessment
- Spring 2025 – Preparation of Feasibility Study
- Fall 2025 – Public Participation on Proposed Plan
- October 2025 – Expected timeframe for Record of Decision for McLouth Steel



Contacts

- **Nilia Moberly Green**

USEPA Remedial Project Manager,
green.nilia@epa.gov,
312-353-6713

- **Courtney Fung**

EGLE Superfund Project Manager
FungC@michigan.gov
517-242-0008



Thank you for your interest

McLouth Steel RI/FS Update

Community Advisory Group Meeting
November 9, 2023

Christopher Vandegrift, Project Manager, CDM Smith
Nilia Green, Remedial Project Manager, USEPA

