



# McLouth Steel RI/FS Update

Community Advisory Group Meeting

February 8, 2024



**Christopher Vandegrift, Project Manager, CDM Smith**

**Nilia Moberly Green, Remedial Project Manager, USEPA**



# Remedial Investigation / Feasibility Study (RI/FS)

- A Remedial Investigation is being performed to collect information on the nature and extent of contamination at the former steel plant property.
- The goals of the RI are two-fold:
  - to provide enough detail to assess the risks posed by the site to human health and the environment, and
  - to enable evaluation of potential and appropriate remedial measures in the Feasibility Study .

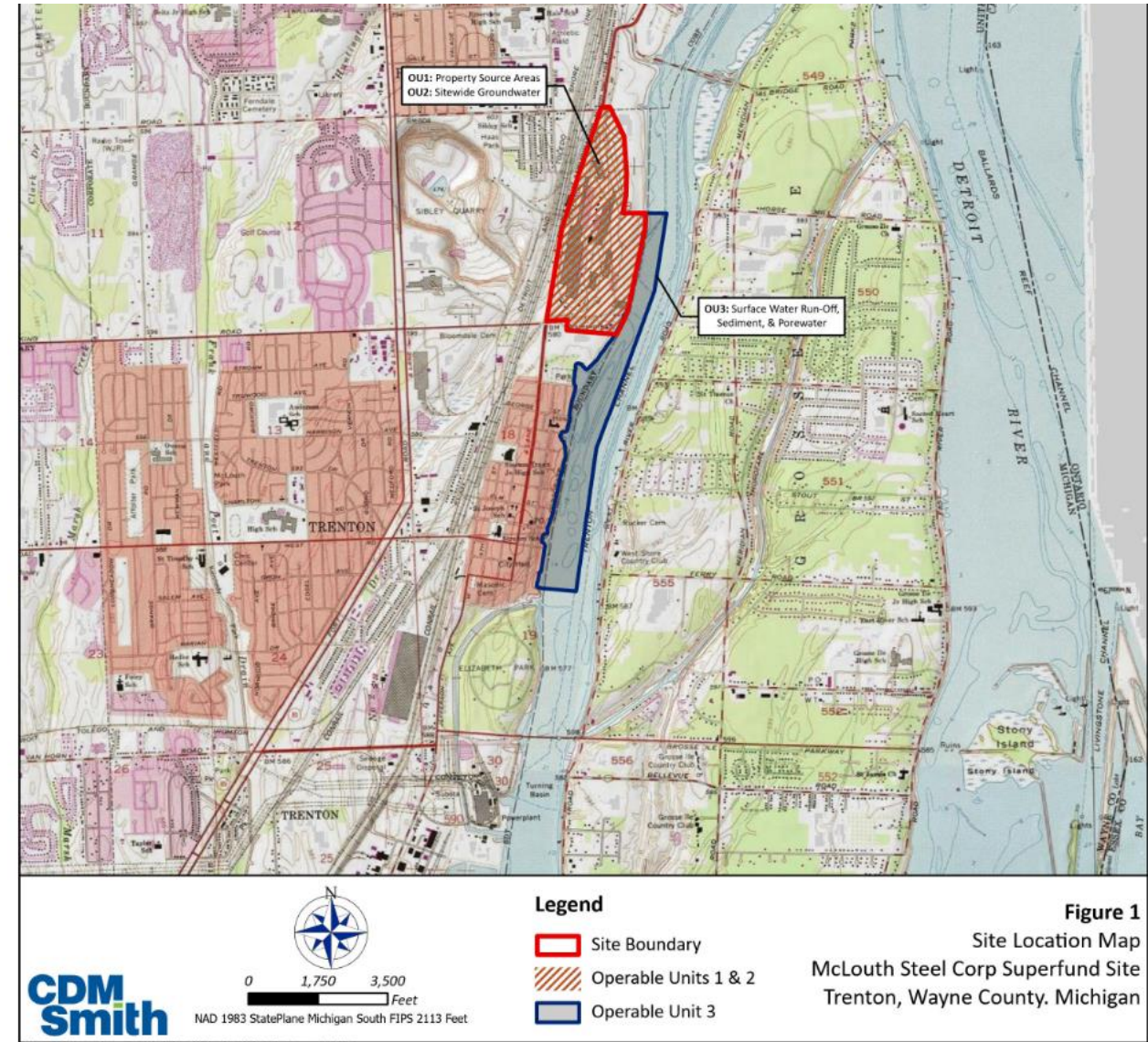


McLouth Steel



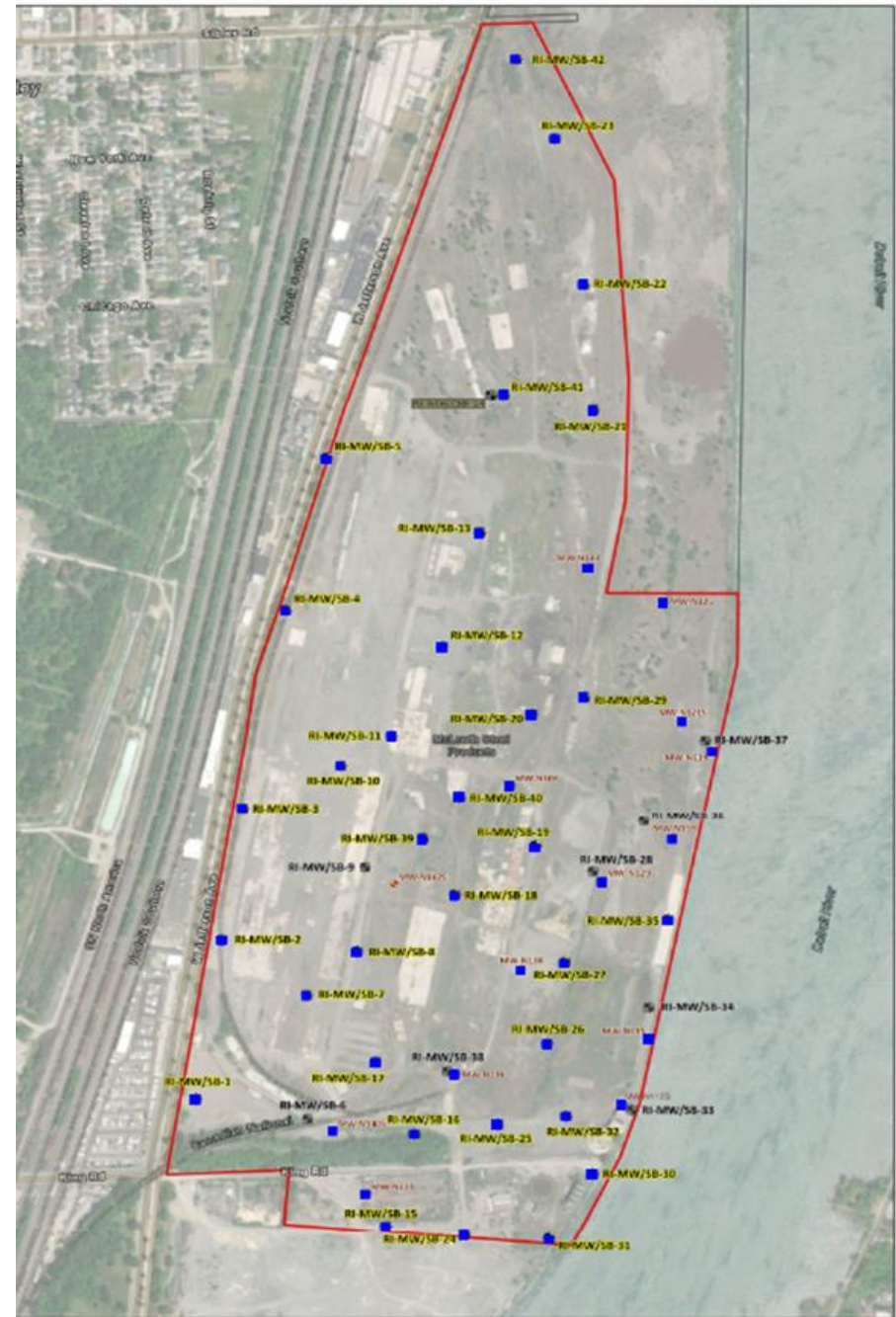
# Three Operable Units

- Operable Unit 1 (OU1) – Source Areas
  - Releases to the land, fill materials, steel plant slag, etc.
- Operable Unit 2 (OU2) – Groundwater
  - Impacts to groundwater, assessment of site hydrogeology, evaluation groundwater discharge
- Operable Unit 3 (OU3)– Trenton Channel
  - Groundwater discharge to surface water, impacts to sediment and porewater



# OU1 and OU2 - Investigation

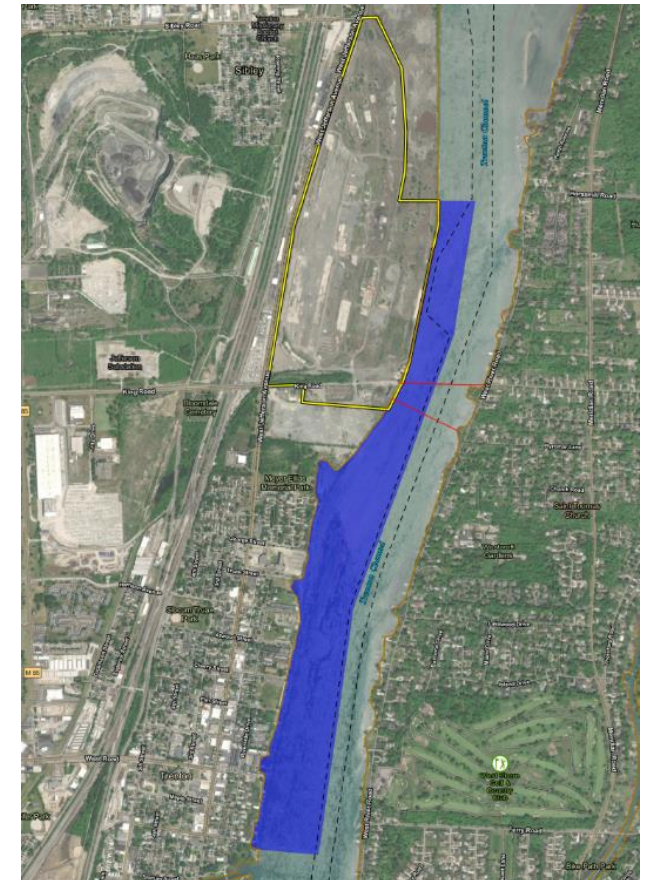
- Fall 2023
  - ✓ Soil borings/soil sampling
  - ✓ Monitoring well installation
  - ✓ Well development
- Since November 2023
  - ✓ Synoptic round of water level elevations
  - ✓ Groundwater sampling
  - ✓ Hydraulic testing of monitoring wells
- Pending
  - Survey of new monitoring wells





# OU3 - Investigation

- Fall 2023
  - ✓ Sediment Sampling by Ponar dredge and Vibracore
- Since November 2023
  - ✓ Sediment Trap Sampling
    - Deployed in December and retrieved in January 2024
    - Limited recovery
- Pending
  - Bathymetric Survey of Trenton Channel (Water depths as well as any underwater features)
  - Surface Water Sampling





# Work in Progress

- Generation of groundwater contour figures & maps of groundwater flow directions
- Validation and tabulation of laboratory data
- Generation of contaminant distribution figures
- Preparation of Technical Memoranda
- Identification of data gaps and recommendations for Year 2 Field Work



# What's Next – General Schedule

- 1<sup>st</sup> Quarter 2024 – Evaluation of OU1/OU2/OU3 Field and Laboratory Data
- 2<sup>nd</sup> Quarter 2024 – Draft Technical Memoranda to EPA
- Spring / Summer 2024 – Year 2 Field Work
- Fall 2024 – Completion Remedial Investigation and Risk Assessment
- Spring 2025 – Preparation of Feasibility Study (Remedial Evaluation)
- Fall 2025 – Public Participation on Proposed Plan
- October 2025 – Expected timeframe for Record of Decision for McLouth Steel



# Agency Contacts

- **Nilia Moberly Green**

USEPA Remedial Project Manager

green.nilia@epa.gov

312-353-6713

- **Megan Cynar**

EGLE Superfund Project Manager

cynarm@michigan.gov

517-256-2681





# Thank you for your interest

# McLouth Steel RI/FS Update

Community Advisory Group Meeting

February 8, 2024



**Christopher Vandegrift, Project Manager, CDM Smith**

**Nilia Green, Remedial Project Manager, USEPA**

