



McLouth Steel RI/FS Update

Community Advisory Group Meeting

February 13, 2025

Nilia Moberly Green, Remedial Project Manager, USEPA

Megan Cynar, Superfund Project Manager, EGLE

Christopher Vandegrift, Project Manager, CDM Smith



Remedial Investigation / Feasibility Study (RI/FS)

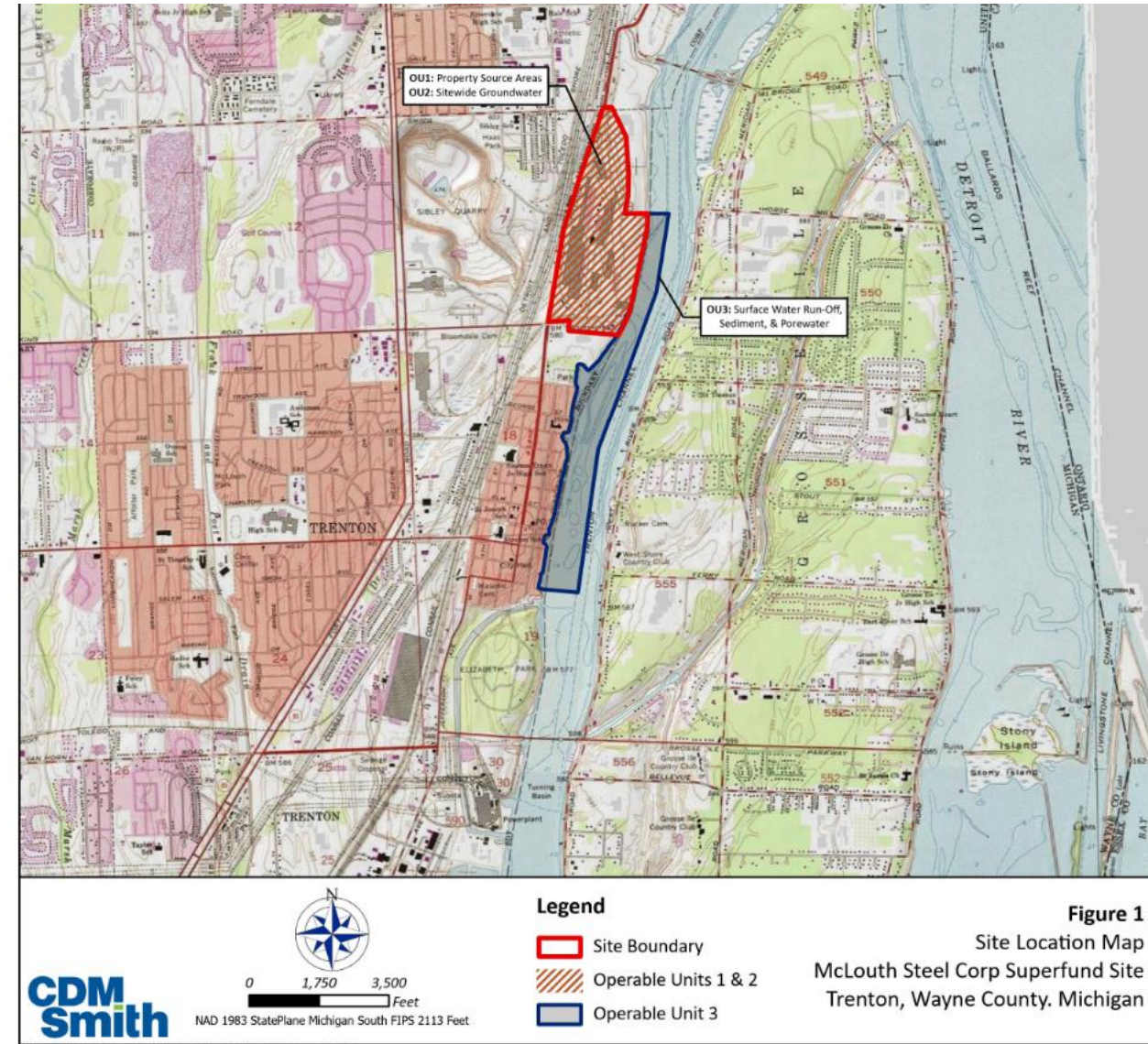
- A Remedial Investigation is being performed to collect information on the nature and extent of contamination at the former steel plant property.
- The goals of the RI are to assess the risks posed by the site to human health and the environment, and to evaluate potential and appropriate remedial measures.



McLouth Steel

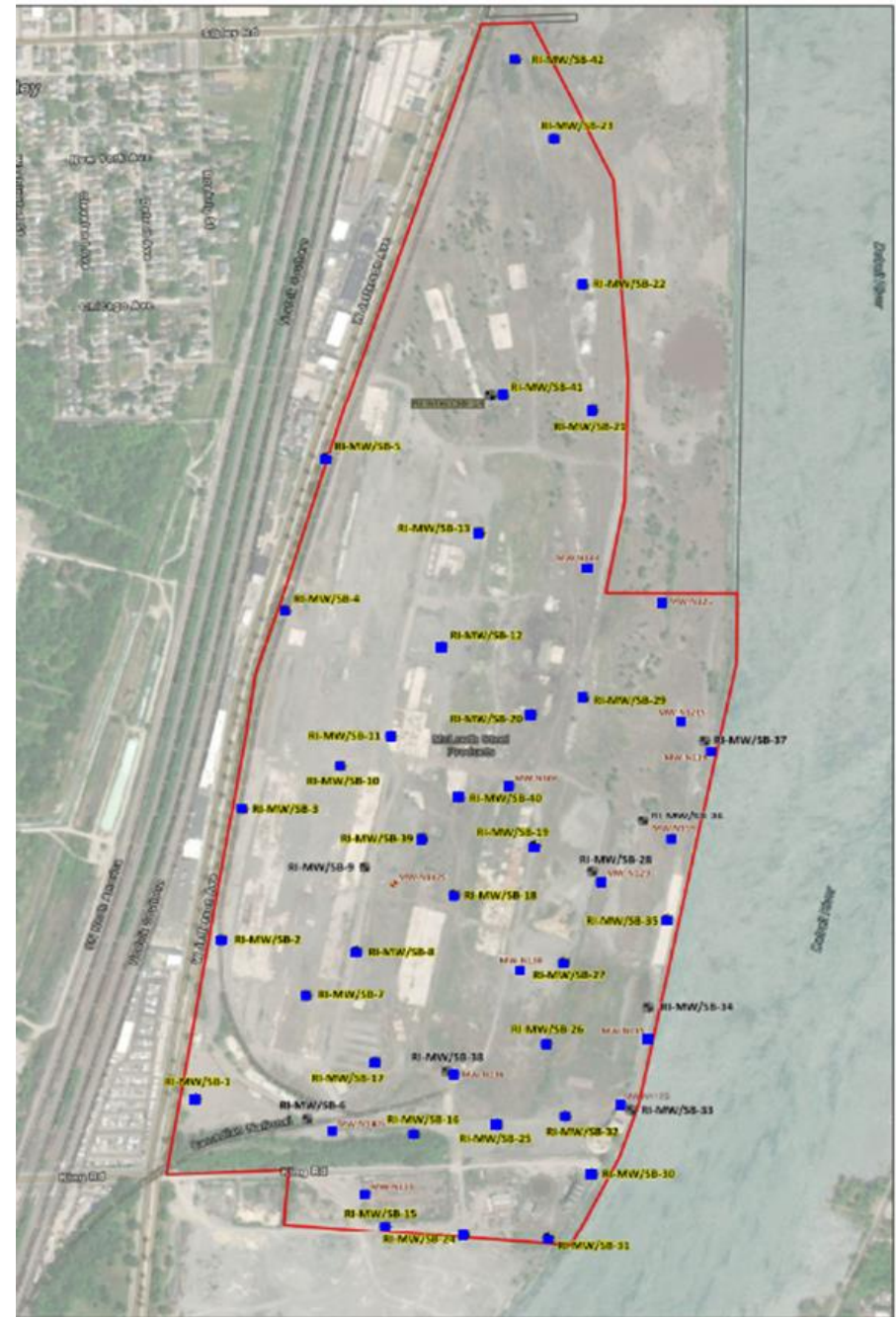
Three Operable Units

- Operable Unit 1 (OU1) – Source Areas
 - Releases to the land, fill materials, steel plant slag, etc.
- Operable Unit 2 (OU2) – Groundwater
 - Impacts to groundwater, assessment of site hydrogeology, evaluation groundwater discharge
- Operable Unit 3 (OU3)– Trenton Channel
 - Groundwater discharge to surface water, impacts to sediment and porewater



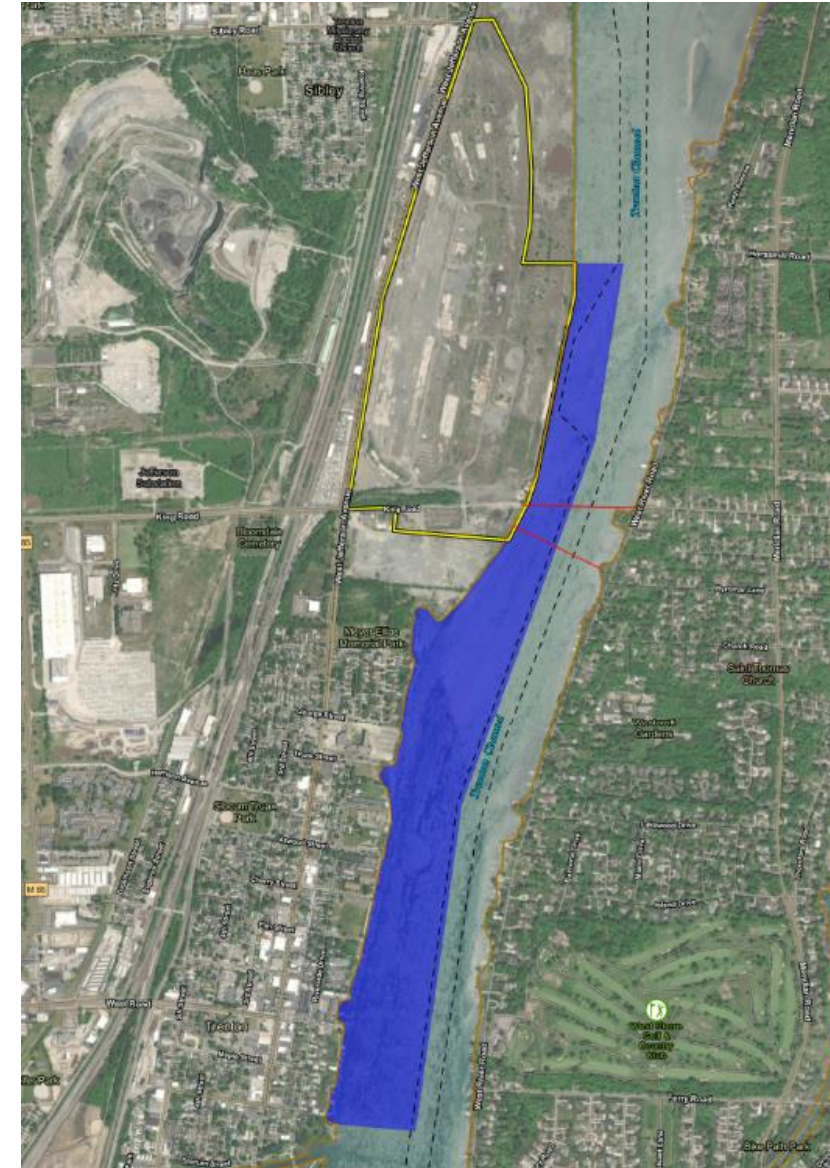
OU1 and OU2 - Investigation

- Work Completed (Year 1)
 - ✓ Soil borings/soil sampling (34 borings)
 - ✓ Monitoring well installation (32 new wells)
 - ✓ Well development (32 new & 14 existing)
 - ✓ Synoptic round of water level elevations
 - ✓ Groundwater sampling (46 wells)
 - ✓ Hydraulic testing of monitoring wells (12 wells)
 - ✓ Survey of monitoring wells
 - ✓ Technical Memorandums (posted on EPA website)



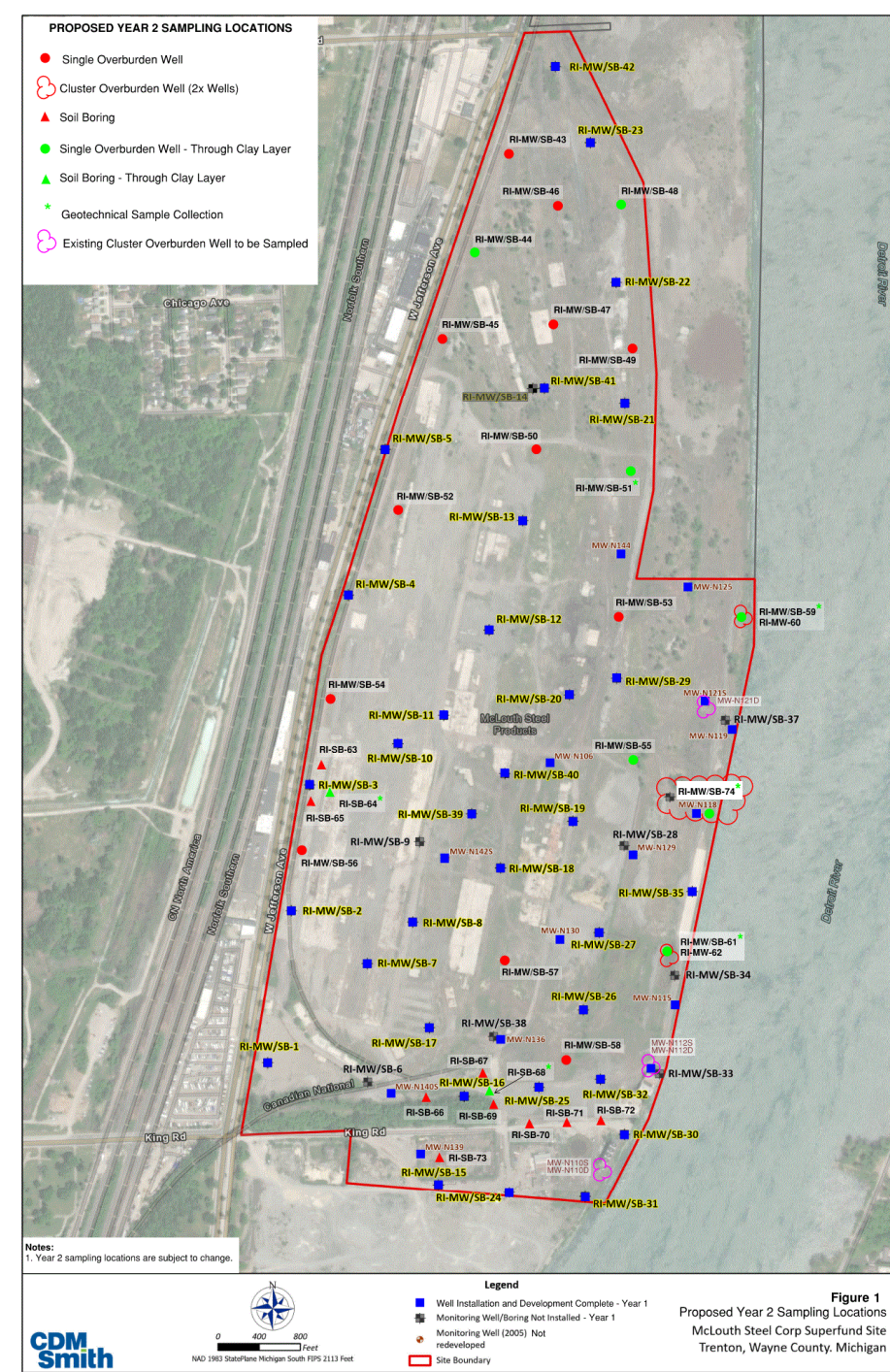
OU3 - Investigation

- Work Completed (Year 1)
 - ✓ Sediment Sampling by PONAR dredge and Vibracore
 - ✓ Sediment Trap Sampling
 - ✓ Surface Water Sampling



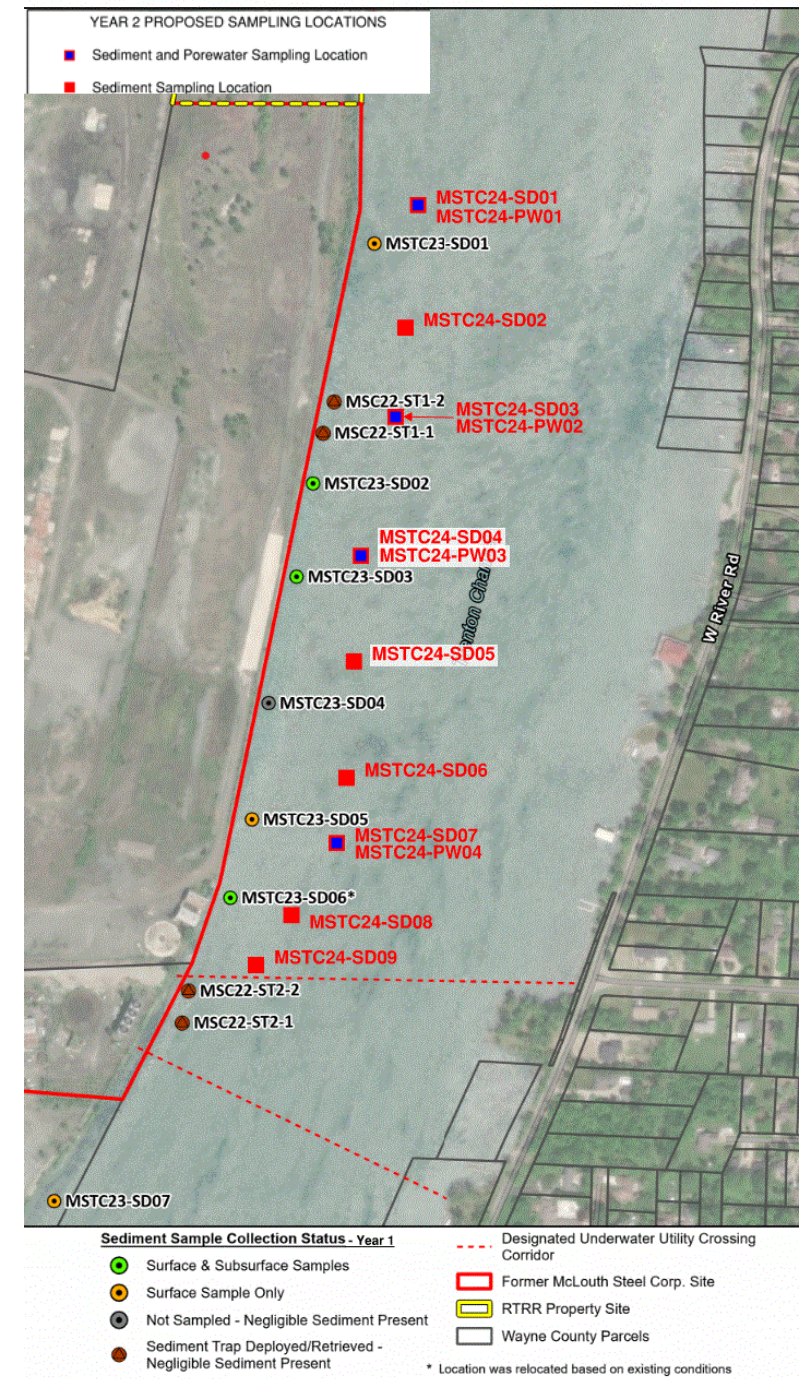
Year 2 Field Program - OU1 & 2

- Advance 32 Soil borings
- Install 19 Monitoring wells
- Hydraulic conductivity testing
- Synoptic and long-term water level measurements
- Passive flux meter deployment
- Groundwater sampling of 65 wells
 - Existing & newly installed



Year 2 Field Program - OU3

- Bathymetric Survey of Trenton Channel
 - Water depths and mapping of potential underwater features
- 12 Sediment Sample Locations - Surface and Cores
- 6 Sediment Porewater Sample Locations.
- 4 Sediment Trap Locations
- Active Surface Water Discharge Locations



What's Next – General Schedule

- 2nd Quarter 2025 - Year 2 Field Work
- 3rd Quarter 2025 – Evaluation of Year 2 Data
- 4th Quarter 2025 – Technical Memorandums
 - Prepare and initiate Groundwater Monitoring Program
 - Bedrock Aquifer Need Assessment
- 1st Quarter 2026 – Preparation of RI/FS

Agency Contacts

- **Nilia Moberly Green**

USEPA Remedial Project Manager

green.nilia@epa.gov

312-353-6713

Megan Cynar

EGLE Superfund Project Manager

cynarm@michigan.gov

517-256-2681

- **McLouth Steel Websites**

- [CAG home page](#)

- <https://www.epa.gov/superfund/mclouth-steel>



Thank you for your interest

McLouth Steel RI/FS Update



Community Advisory Group Meeting

February 13, 2025

Nilia Moberly Green, Remedial Project Manager, USEPA

Megan Cynar, Superfund Project Manager, EGLE

Christopher Vandegrift, Project Manager, CDM Smith

