



McLouth Steel RI/FS Update



Community Advisory Group Meeting

May 8, 2025

Ernest Ashley, Project Technical Lead, CDM Smith

Nilia Moberly Green, Remedial Project Manager, USEPA

Megan Cynar, Superfund Project Manager, EGLE



Remedial Investigation / Feasibility Study (RI/FS)

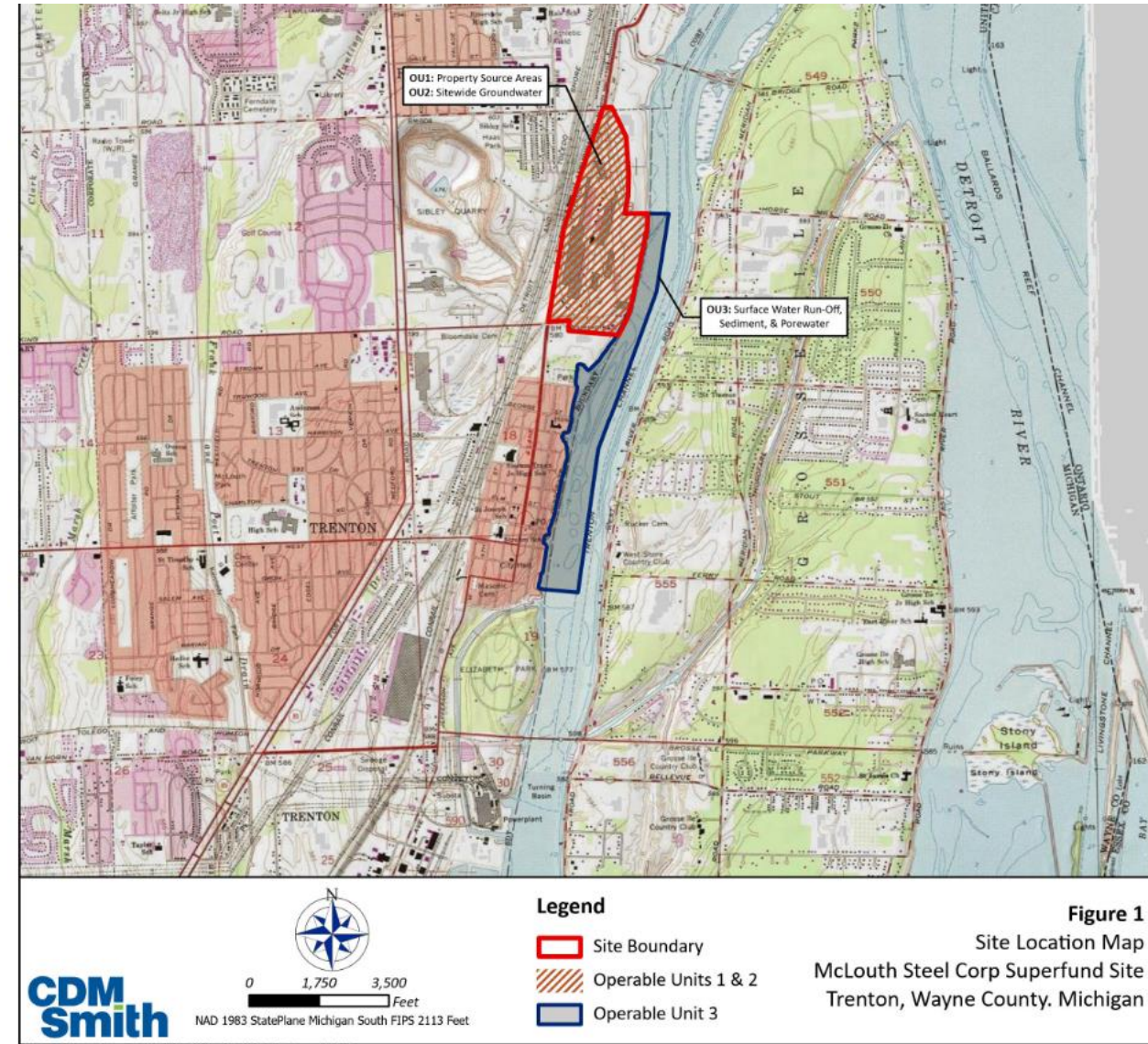
- A Remedial Investigation is being performed to collect information on the nature and extent of contamination at the former steel plant property.
- The goals of the RI are two-fold:
 - to provide enough detail to assess the risks posed by the site to human health and the environment, and
 - to enable evaluation of potential and appropriate remedial measures in the Feasibility Study .



McLouth Steel

Three Operable Units

- Operable Unit 1 (OU1) – Source Areas
 - Releases to the land, fill materials, steel plant slag, etc.
- Operable Unit 2 (OU2) – Groundwater
 - Impacts to groundwater, assessment of site hydrogeology, evaluation groundwater discharge
- Operable Unit 3 (OU3)– Trenton Channel
 - Groundwater discharge to surface water, impacts to sediment and porewater



OU1 and OU2 - Investigation

■ Work Completed

- ✓ Soil borings/soil sampling (34 borings)
- ✓ Monitoring well installation (32 new wells)
- ✓ Well development (32 new & 14 existing)
- ✓ Synoptic round of water level elevations
- ✓ Groundwater sampling (46 wells)
- ✓ Hydraulic testing of monitoring wells (12 wells)
- ✓ Survey of monitoring wells
- ✓ Technical Memorandums (posted on EPA website)



Year 2 Field Program - OU1 & 2 Starting May 2025

- 32 soil borings
- 19 additional monitoring wells
- Additional hydraulic conductivity testing
- Synoptic and long-term water level measurements
- Passive flux meter deployment
- 65 wells to be sampled including
 - 6 well clusters along the Trenton Channel
 - Analyses for soil and groundwater same as last year
 - VOCs, SVOCs, PCBs, D/F, PFAS, Metals, pH

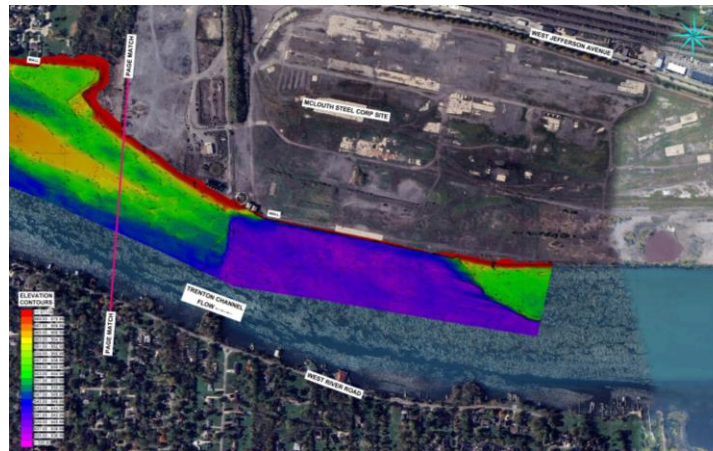


Figure 4
Proposed Year 2 Sampling Locations
McLaugh Steel Corp Superfund Site
Trenton, Wayne County, Michigan

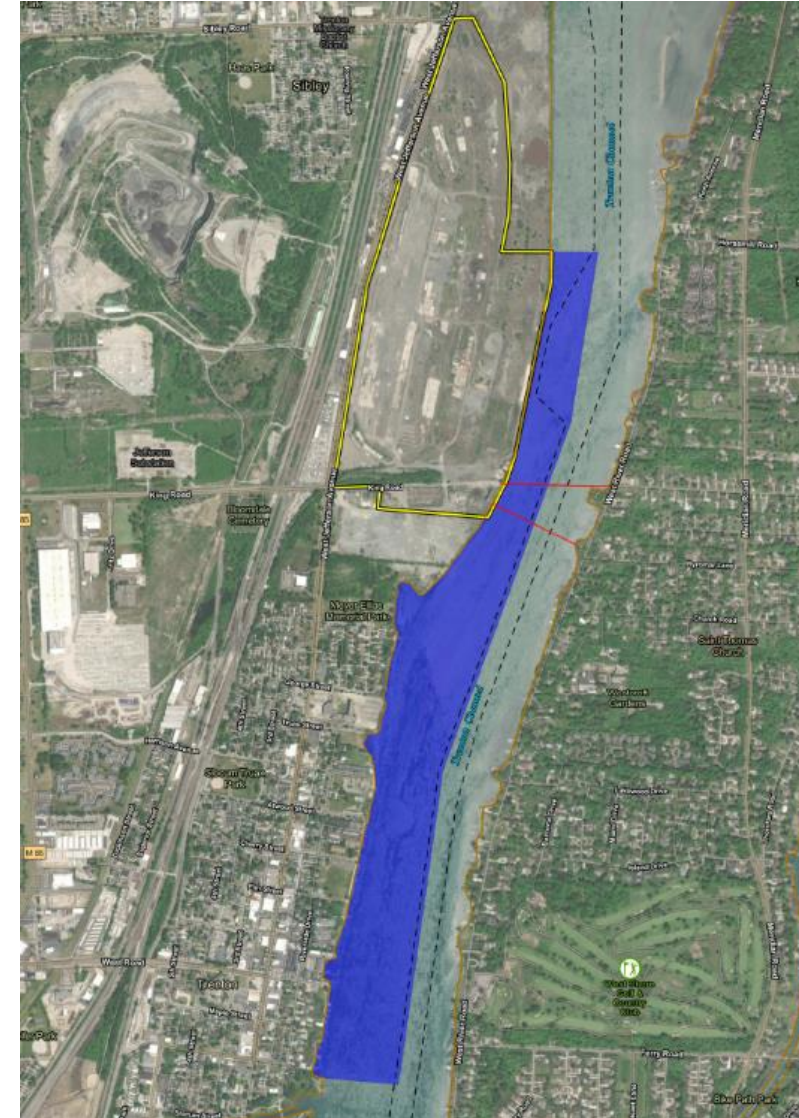
OU3 - Investigation

■ Work Completed

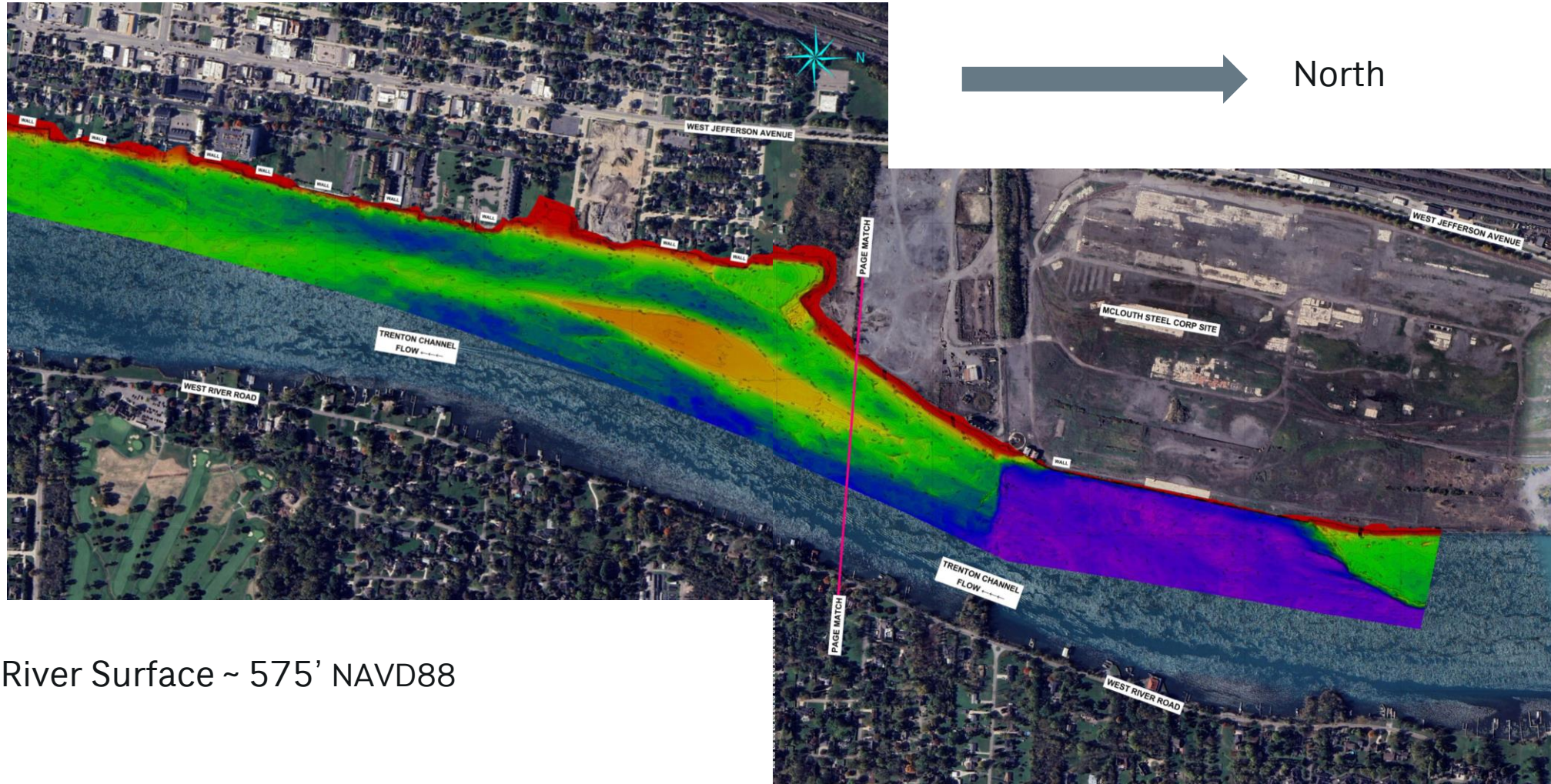
- ✓ Sediment Sampling by PONAR dredge and Vibracore
- ✓ Sediment Trap Sampling
- ✓ Surface Water Sampling
- ✓ Bathymetric Survey



OU3 Area of Investigation

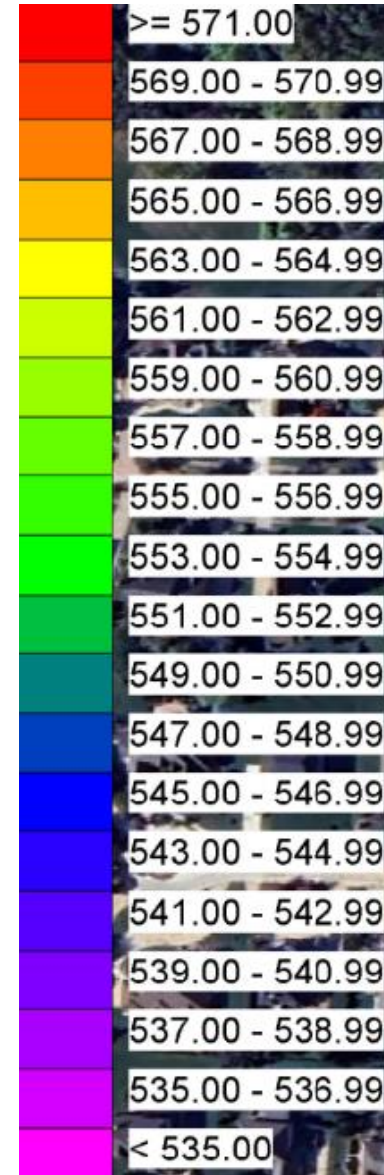


Bathymetry Survey of OU3

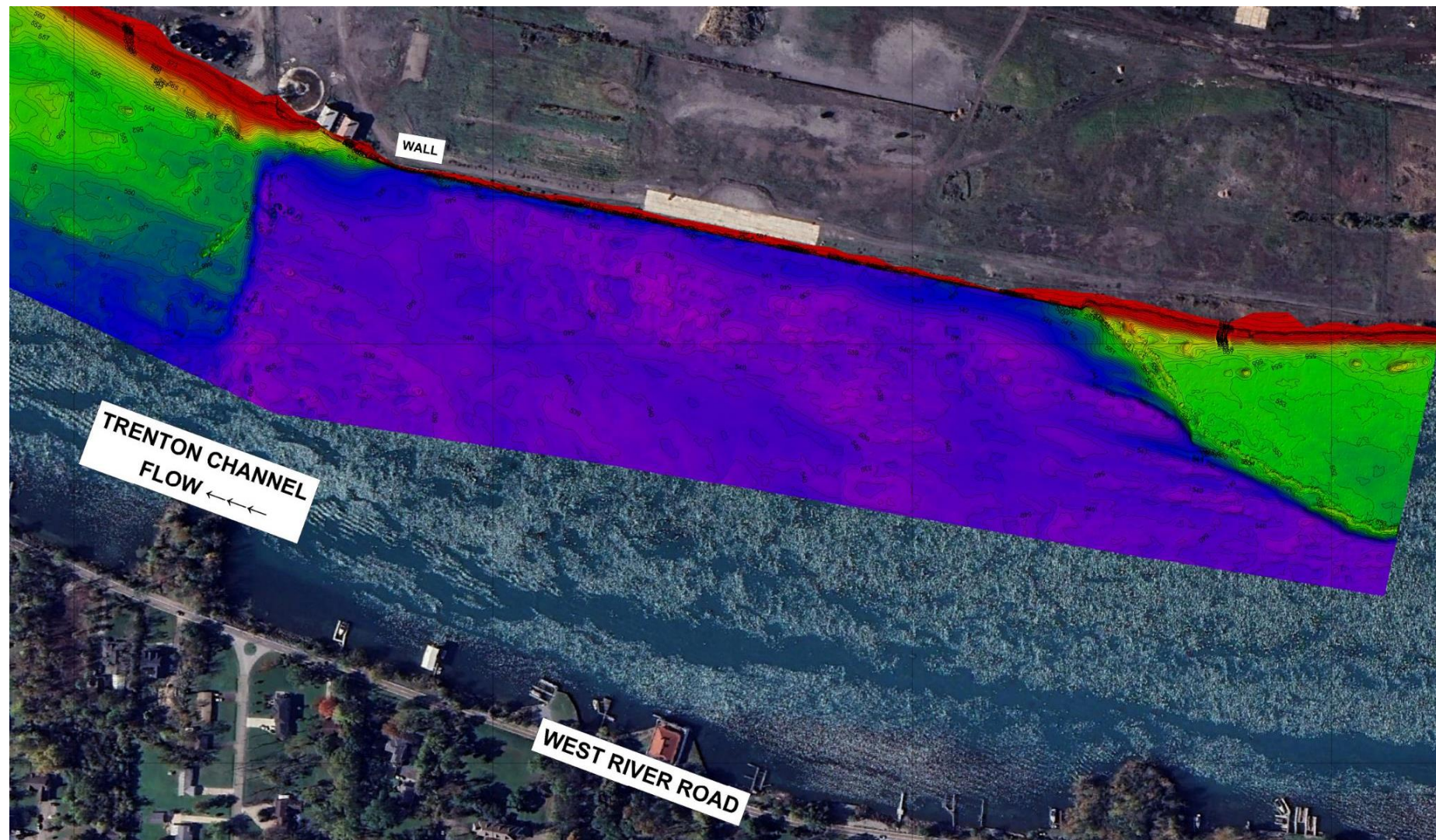


River Surface ~ 575' NAVD88

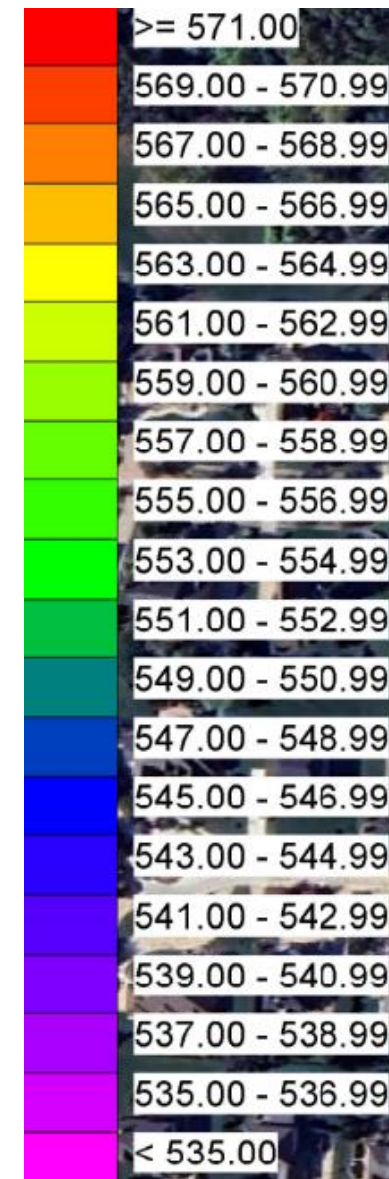
CONTOUR ELEVATION



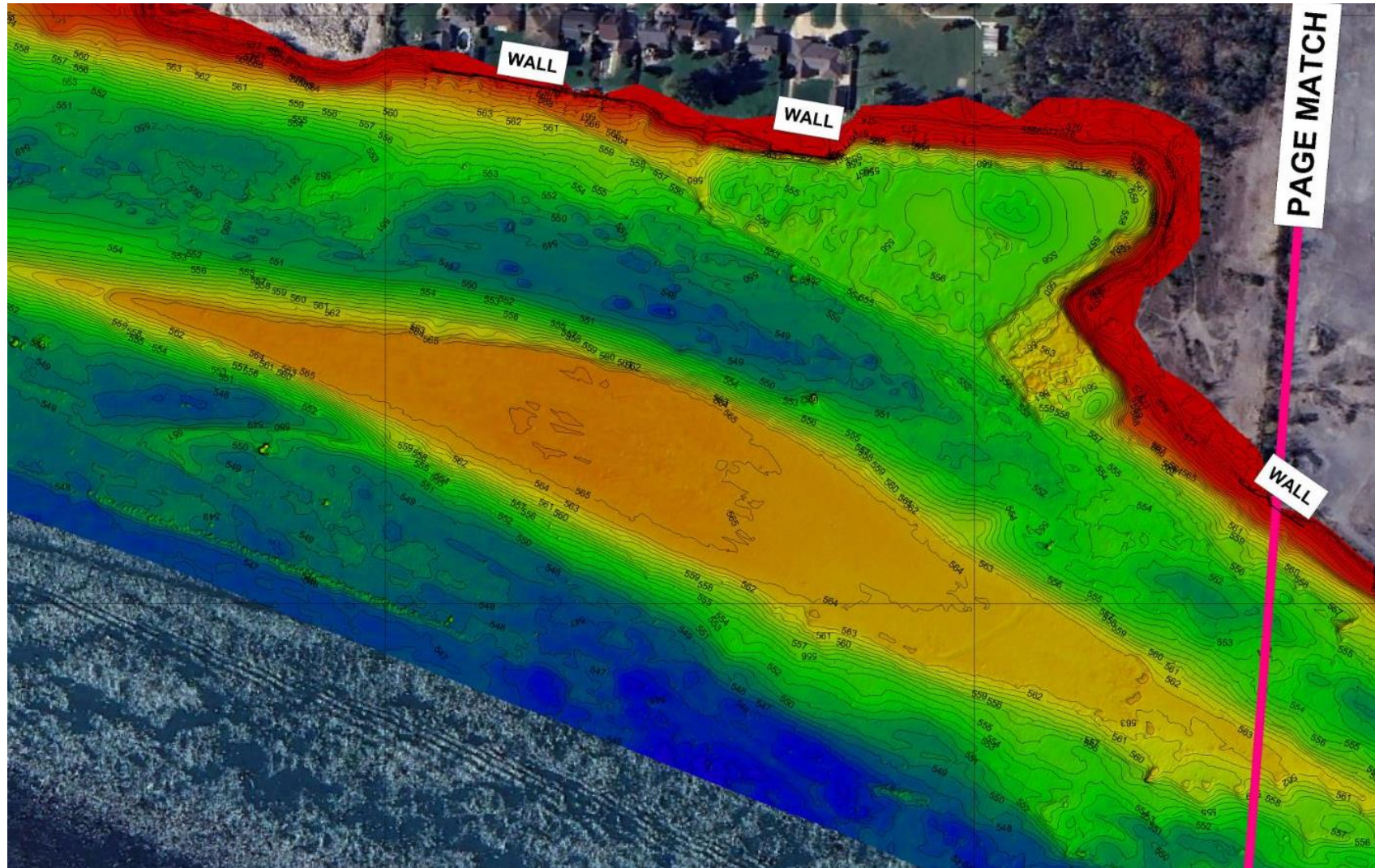
Bathymetry Survey – Dredged area adjacent to the McLouth Site



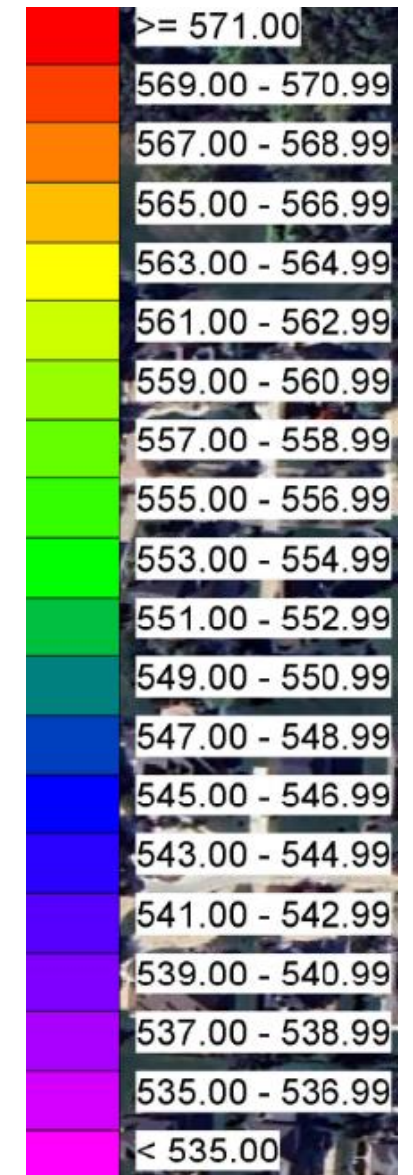
CONTOUR ELEVATION



Bathymetry Survey – Channel bar downstream of the McLouth Site



CONTOUR ELEVATION



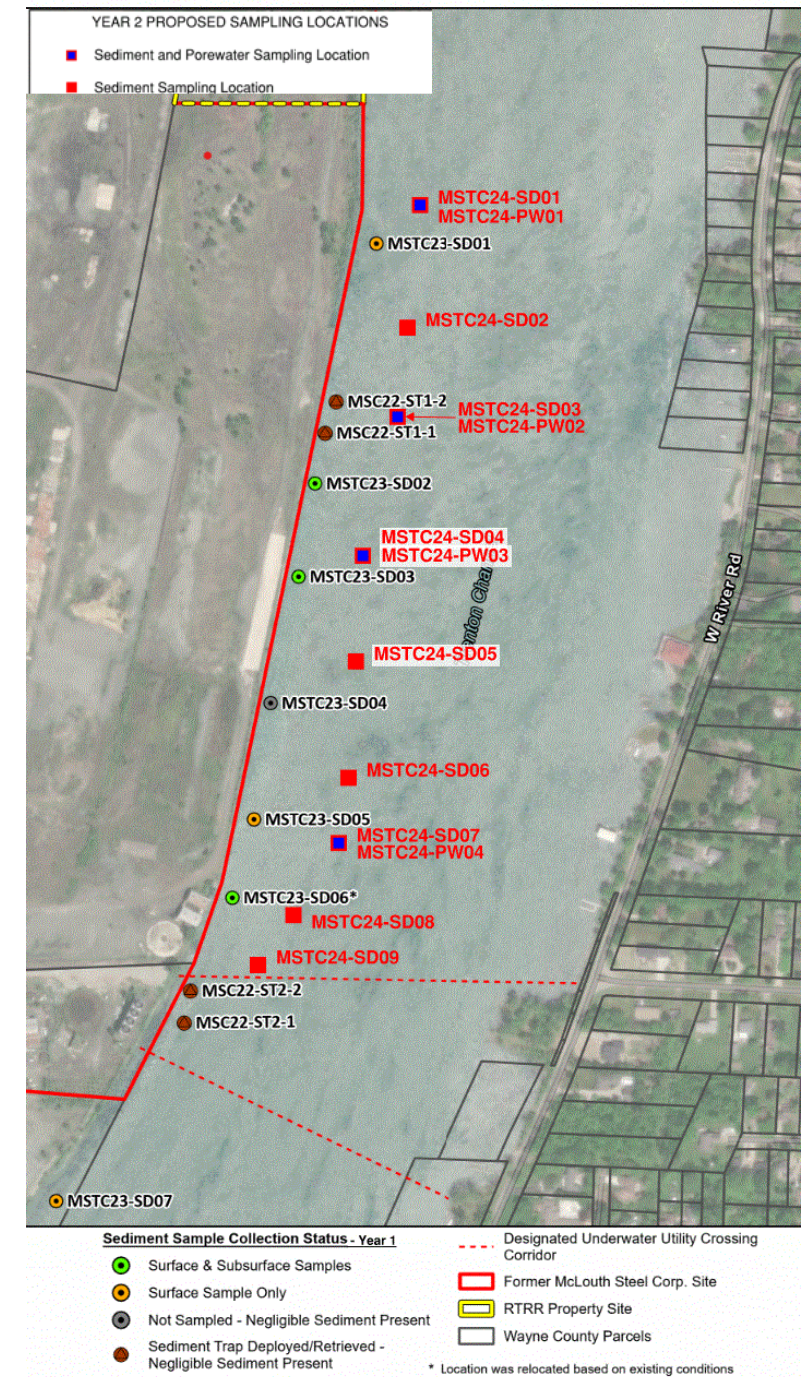
Bathymetry Survey – Side Scan Sonar adjacent to the McLouth Site



Year 2 Field Program – OU3

Start date July 2025

- 12 Sediment Sample Locations - surface and cores
- 6 Sediment Porewater Sample Locations
- 4 Sediment Trap Locations
- Active Surface Water Discharge Locations
- Analyses to include: volatile organic compounds (VOCs), pesticides, polychlorinated biphenyls Aroclors (PCBs), metals, mercury, and cyanide; dioxin/furans, total organic carbon (TOC), 34 polyaromatic hydrocarbons (PAHs), pH, total petroleum hydrocarbon – diesel range organics (TPH-DRO), total petroleum hydrocarbon – oil range organics (TPH-ORO), and oil and grease, acid volatile sulfide-simultaneous extracted metal (AVS-SEM)





What's Next – General Schedule

- Spring - Summer 2025 - Year 2 Field Work
- Fall 2025 – Evaluation of Year 2 Data and Technical Memorandums
 - Prepare Groundwater Monitoring Program
 - Bedrock Aquifer Need Assessment
- 2026 – Preparation of RI/FS

Agency Contacts

- **Nilia Moberly Green**

USEPA Remedial Project Manager

green.nilia@epa.gov

312-353-6713

Megan Cynar

EGLE Superfund Project Manager

cynarm@michigan.gov

517-256-2681

- **McLouth Steel Websites**

- [CAG home page](#)

- <https://cumulis.epa.gov/supercpad/cursites/csitinfo.cfm?id=0502434>



McLouth Steel RI/FS Update



Community Advisory Group Meeting

May 8, 2025

Ernest Ashley, Project Technical Lead, CDM Smith

Nilia Moberly Green, Remedial Project Manager, USEPA

Megan Cynar, Superfund Project Manager, EGLE

