



McLouth Steel RI/FS Update

Community Advisory Group Meeting

August 14, 2025

Christopher Vandegrift, Project Manager, CDM Smith

Nilia Moberly Green, Remedial Project Manager, USEPA

Megan Cynar, Superfund Project Manager, EGLE



Remedial Investigation / Feasibility Study (RI/FS)

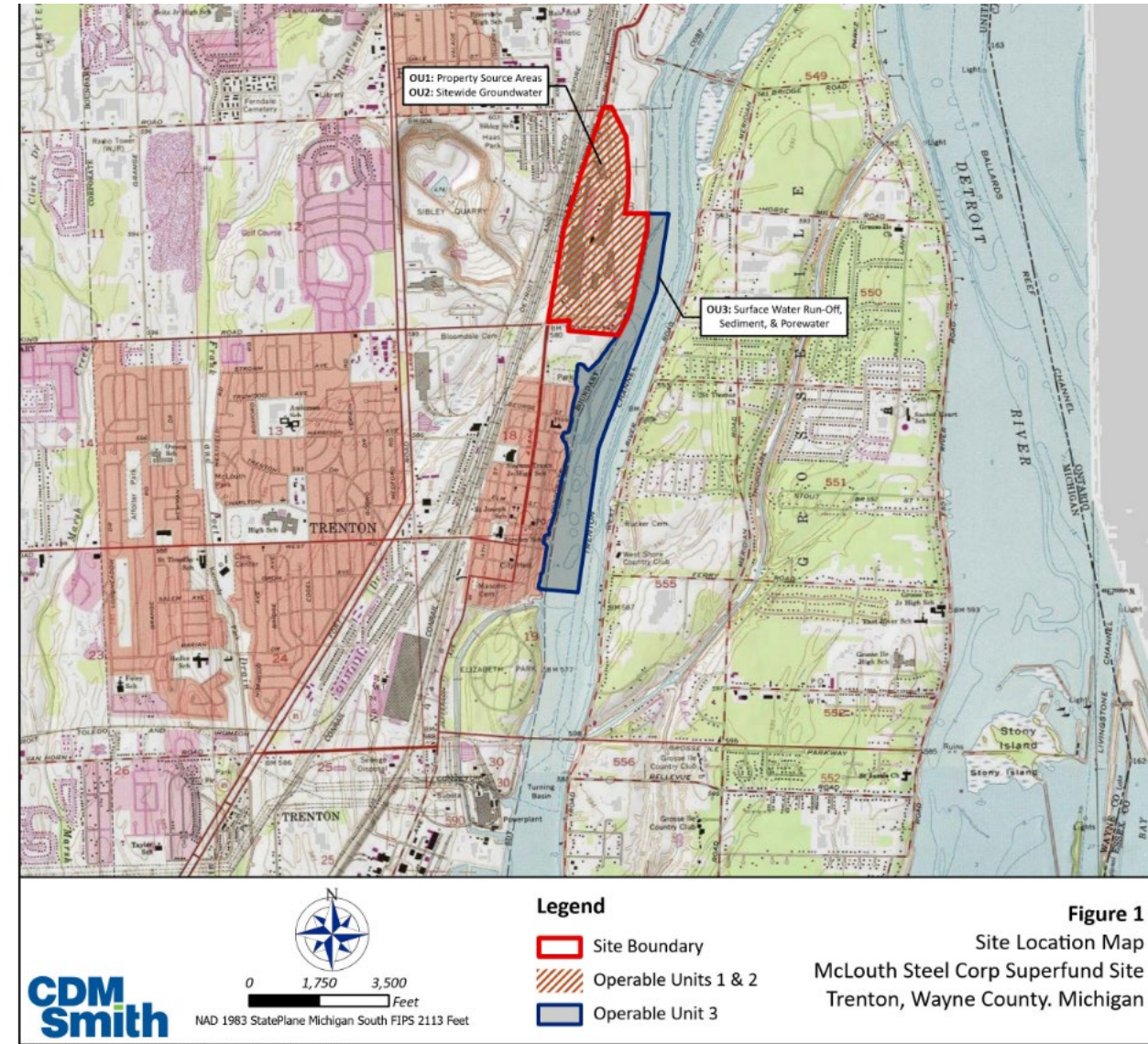
- A Remedial Investigation is being performed to collect information on the nature and extent of contamination at the former steel plant property.
- The goals of the RI are two-fold:
 - to provide enough detail to assess the risks posed by the site to human health and the environment, and
 - to enable evaluation of potential and appropriate remedial measures in the Feasibility Study .



McLouth Steel

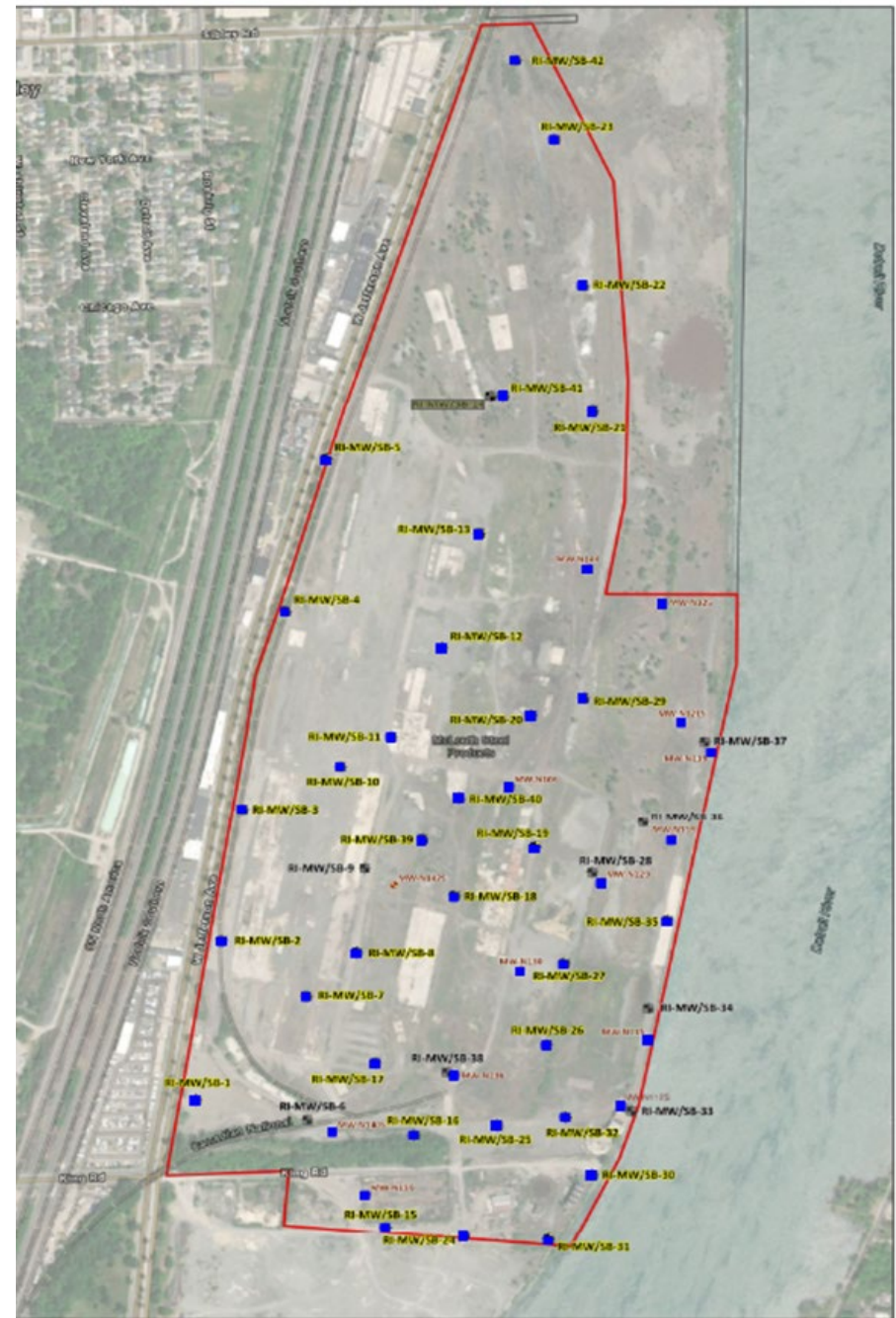
Three Operable Units

- Operable Unit 1 (OU1) – Source Areas
 - Releases to the land, fill materials, steel plant slag, etc.
- Operable Unit 2 (OU2) – Groundwater
 - Impacts to groundwater, assessment of site hydrogeology, evaluation groundwater discharge
- Operable Unit 3 (OU3)– Trenton Channel
 - Groundwater discharge to surface water, impacts to sediment and porewater



OU1 and OU2 - Investigation

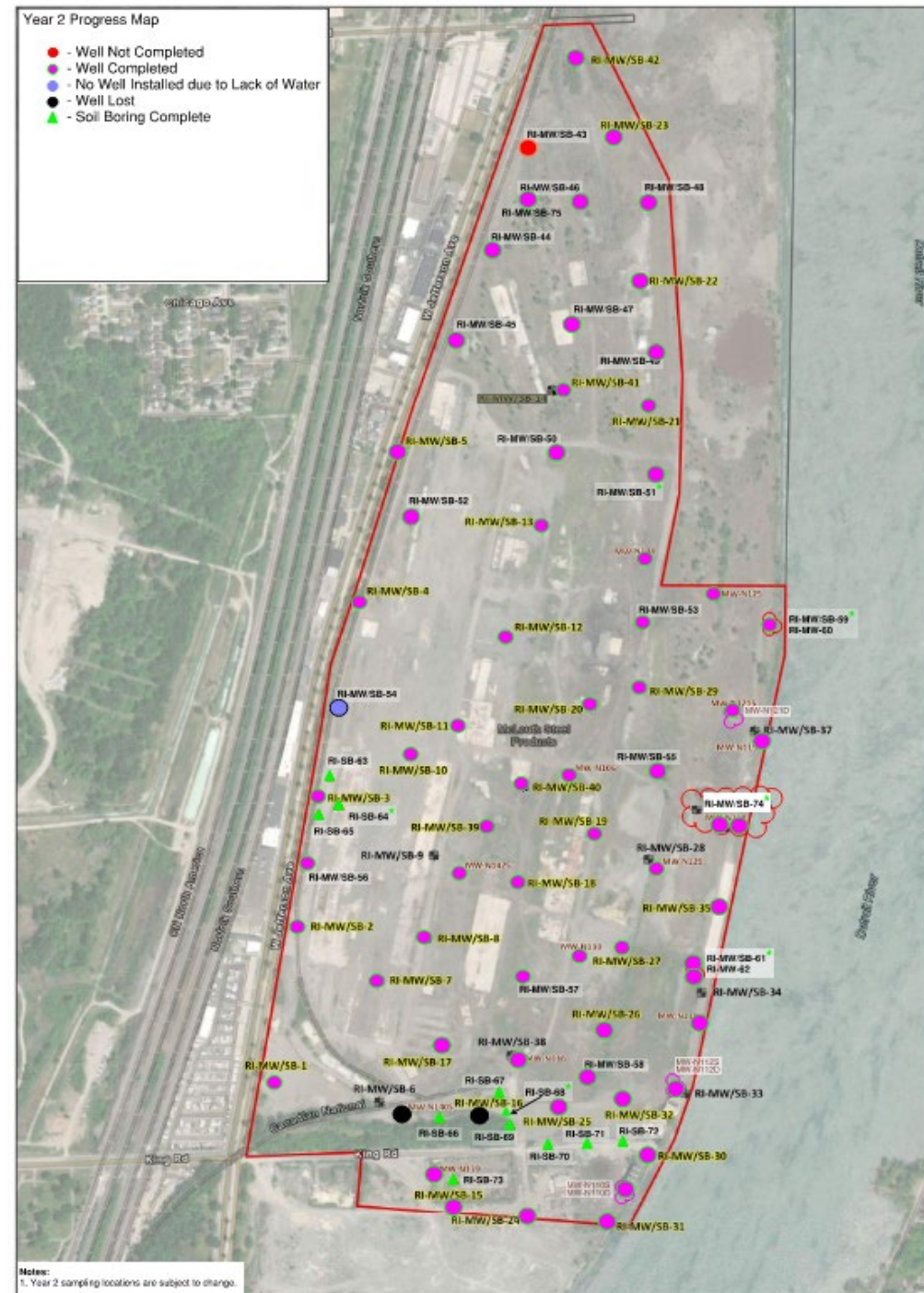
- Work Completed – Year 1
 - ✓ Soil borings/soil sampling (34 borings)
 - ✓ Monitoring well installation (32 new wells)
 - ✓ Well development (32 new & 14 existing)
 - ✓ Synoptic round of water level elevations
 - ✓ Groundwater sampling (46 wells)
 - ✓ Hydraulic testing of monitoring wells (12 wells)
 - ✓ Survey of monitoring wells
 - ✓ Technical Memorandums (posted on EPA website)



OU1 and OU2 - Investigation

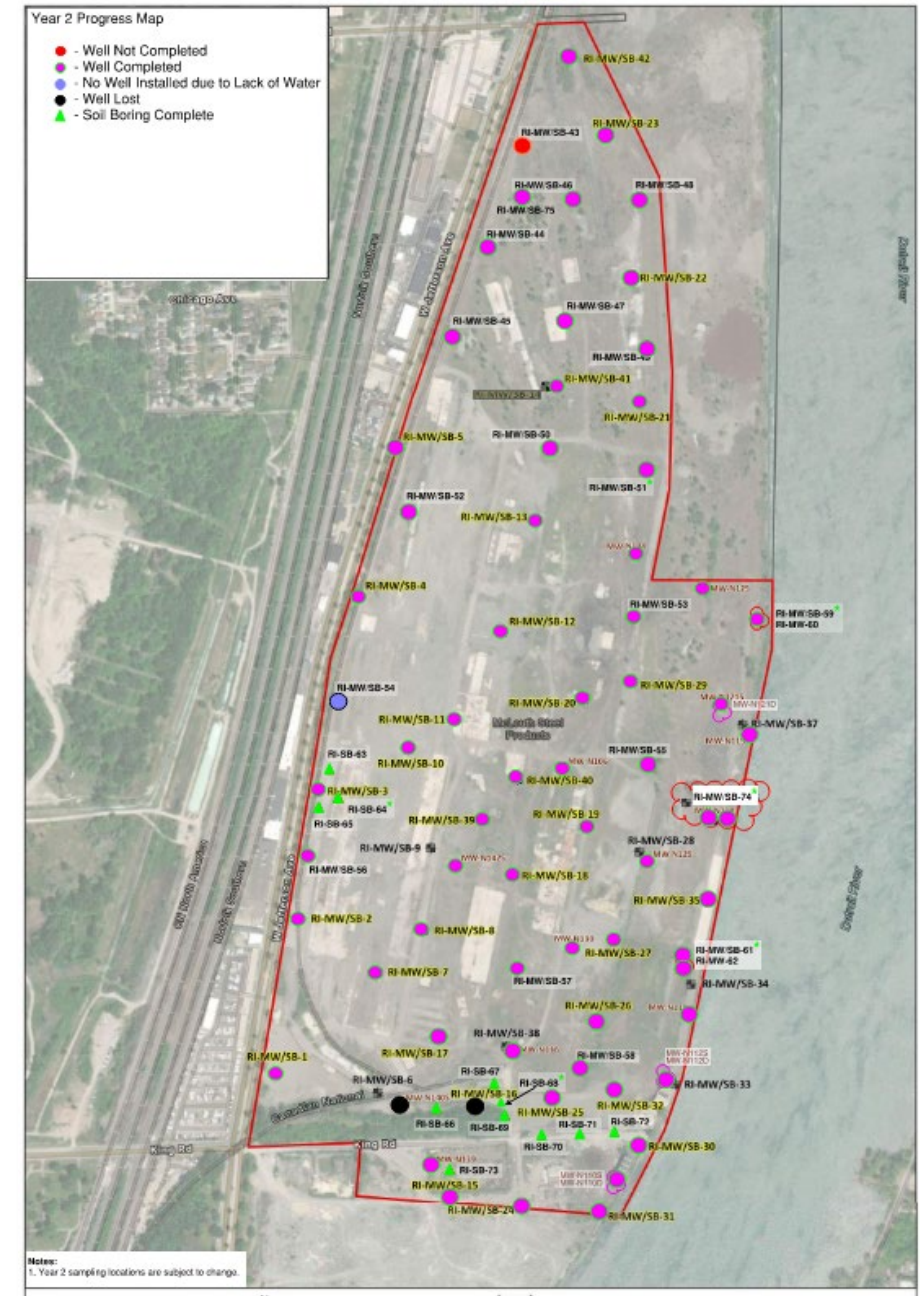
Work Completed – Year 2

- ✓ Soil borings/soil sampling (31 borings)
- ✓ Monitoring well installation (20 new wells)
- ✓ Well development (20 new wells)
- ✓ Synoptic round of water level elevations
- ✓ Groundwater sampling (61 wells)
 - 6 well clusters along the Trenton Channel
 - Analyses for soil and groundwater same as Year 1
 - VOCs, SVOCs, PCBs, D/F, PFAS, Metals, pH



OU1 and OU2 - Investigation

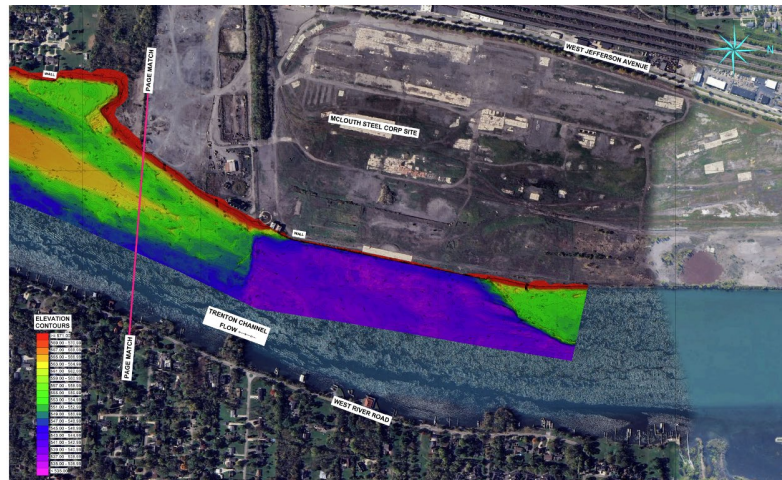
- Work Planned – Year 2
 - Passive flux meter deployment (within well clusters)
 - Additional hydraulic conductivity testing
 - Well location & elevation survey
 - Technical Memorandums



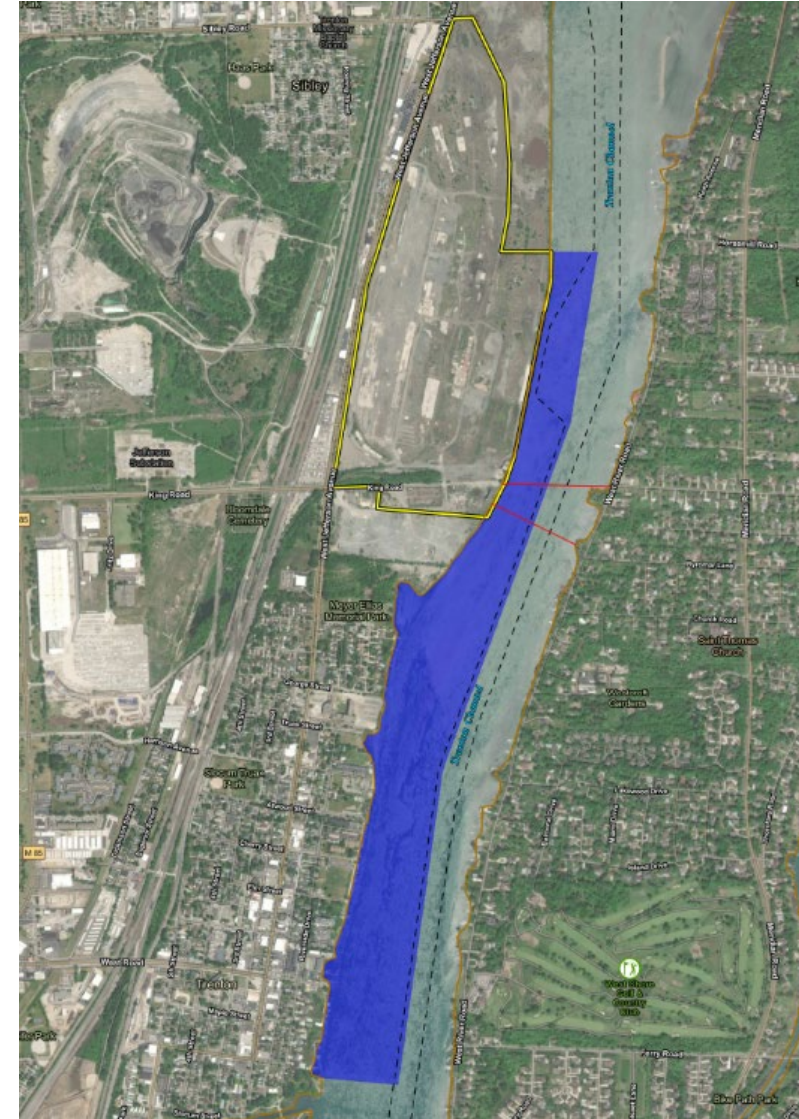
OU3 - Investigation

■ Work Completed – Year 1

- ✓ Sediment Sampling by PONAR dredge and Vibracore
- ✓ Sediment Trap Sampling
- ✓ Surface Water Sampling



OU3 Area of Investigation



OU3 – Investigation

■ Work Completed – Year 2

✓ Bathymetric Survey

■ Work Planned:

- 12 Sediment Sample Locations
- 6 Porewater Sample Locations
- 4 Sediment Trap Sample Locations
- Active Surface Water Discharge Locations

- Analyses: volatile organic compounds (VOCs), pesticides, polychlorinated biphenyls Aroclors (PCBs), metals, mercury, and cyanide; dioxin/furans, total organic carbon (TOC), 34 polyaromatic hydrocarbons (PAHs), acid volatile sulfide – simultaneous extracted metal (AVS-SIM), and pH
- New Analyses: total petroleum hydrocarbon – diesel range organics (TPH-DRO), total petroleum hydrocarbon – oil range organics (TPH-ORO), and oil and grease (O&G)



What's Next – General Schedule

- Summer – Fall 2025 - Year 2 Field Work
- Fall – Winter 2025 – Evaluation of Year 2 Data
 - Prepare Groundwater Monitoring Program
 - Bedrock Aquifer Need Assessment
- Winter - Spring 2026 - Technical Memorandums
- Spring 2026 – Preparation of RI/FS

Agency Contacts

- **Nilia Moberly Green**

USEPA Remedial Project Manager

green.nilia@epa.gov

312-353-6713

- **Megan Cynar**

EGLE Superfund Project Manager

cynarm@michigan.gov

517-256-2681

- **McLouth Steel Websites**

- CAG home page - <https://mclouthsteelcag.org/>

- EPA Superfund page - <https://www.epa.gov/superfund/mclouth-steel>



McLouth Steel RI/FS Update

Community Advisory Group Meeting

August 14, 2025

Christopher Vandegrift, Project Manager, CDM Smith

Nilia Moberly Green, Remedial Project Manager, USEPA

Megan Cynar, Superfund Project Manager, EGLE

