



McLouth Steel RI/FS Update

Community Advisory Group Meeting

February 12, 2026

Christopher Vandegrift, Project Manager, CDM Smith

Nilia Moberly Green, Remedial Project Manager, USEPA

Megan Cynar, Superfund Project Manager, EGLE



Remedial Investigation / Feasibility Study (RI/FS)

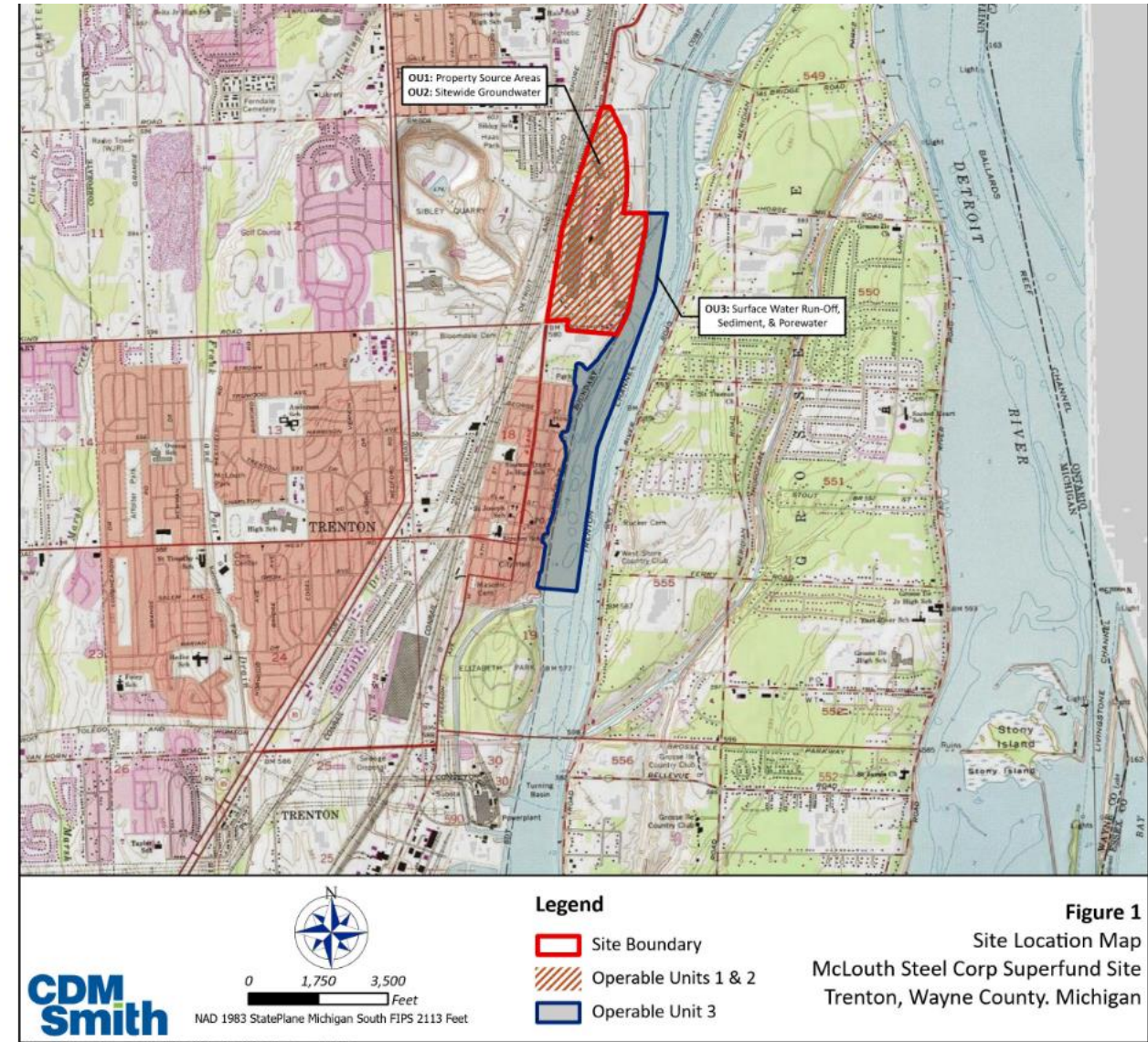
- A Remedial Investigation is being performed to collect information on the nature and extent of contamination at the former steel plant property.
- The goals of the RI are two-fold:
 - to provide enough detail to assess the risks posed by the site to human health and the environment, and
 - to enable evaluation of potential and appropriate remedial measures in the Feasibility Study .



McLouth Steel

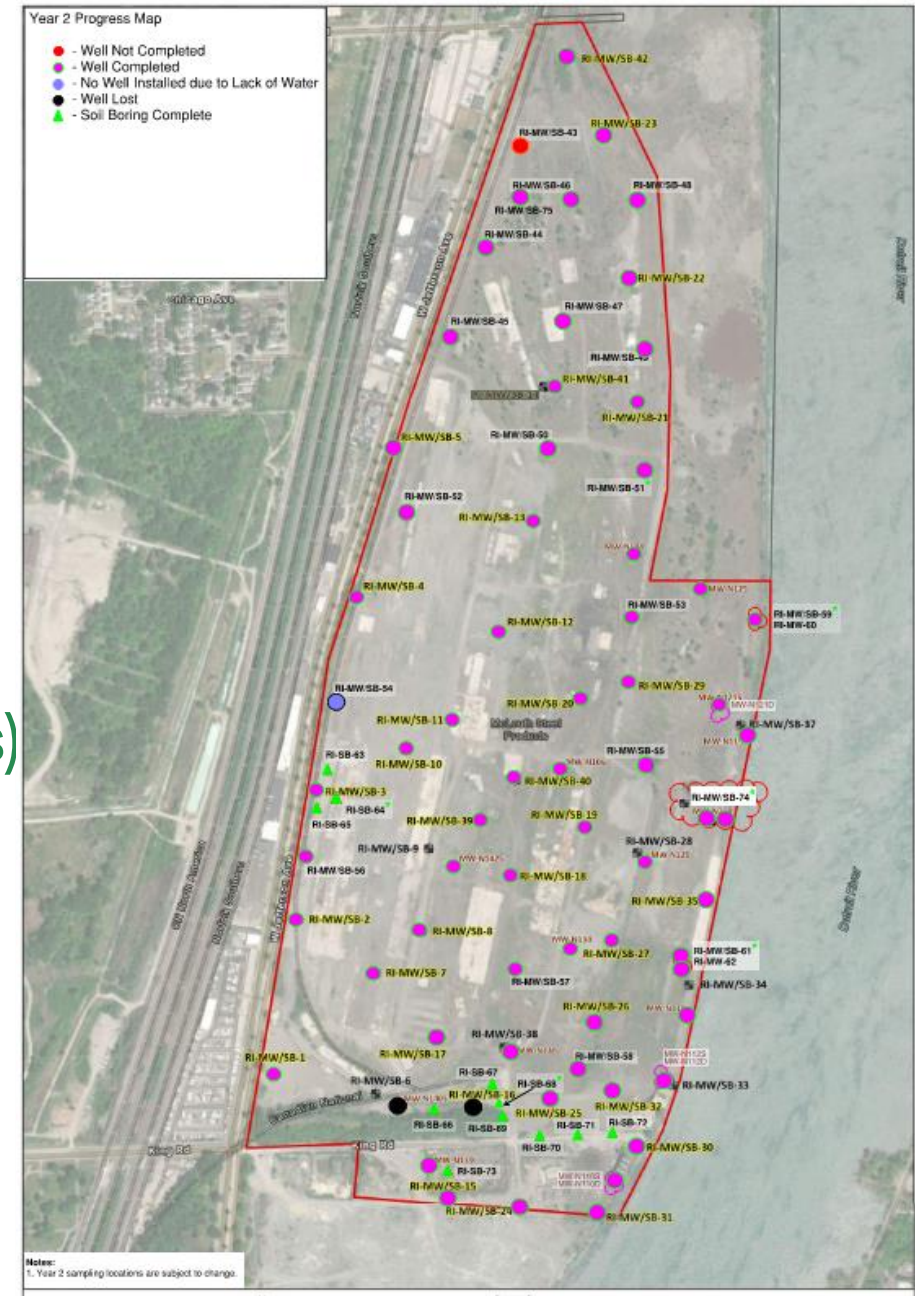
Three Operable Units

- Operable Unit 1 (OU1) – Source Areas
 - Releases to the land, fill materials, steel plant slag, etc.
- Operable Unit 2 (OU2) – Groundwater
 - Impacts to groundwater, assessment of site hydrogeology, evaluation groundwater discharge
- Operable Unit 3 (OU3)– Trenton Channel
 - Groundwater discharge to surface water, impacts to sediment and porewater



OU1 and OU2 - Investigation

- Work Completed – Year 1 & 2
 - ✓ Soil borings/soil sampling (65 borings)
 - ✓ Monitoring well installation (52 new wells)
 - ✓ Well development (52 new & 14 existing)
 - ✓ Synoptic rounds of water level elevations (2 events)
 - ✓ Groundwater sampling (2 events)
 - ✓ Hydraulic testing of select monitoring wells (16)
 - ✓ Survey of boring and monitoring well locations
 - ✓ Technical Memorandums (Year 1 only)



OU1 and OU2 - Investigation

- Work Completed – Year 2
 - ✓ Passive flux meter deployment (within 6 well clusters)
 - ✓ Deployed water level sensors in selected monitoring wells
 - ✓ Disposed soil and water generated



OU1 and OU2 - Investigation

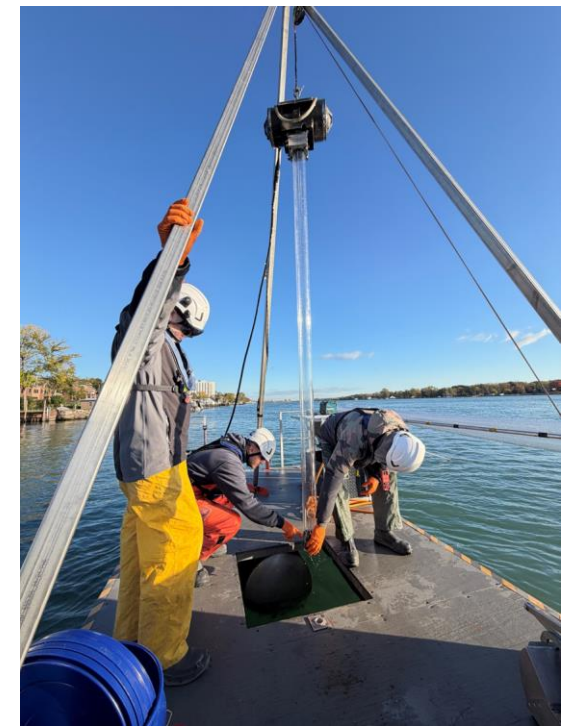
Laboratory Analytical

- Soil – Volatile Organic Compounds (VOCs), Semi-Volatile Organic Compounds (SVOCs), Pesticides, Polychlorinated biphenyls (PCBs), Dioxins/Furans (D/F), Per- and Polyfluoroalkyl Substances (PFAS), Metals, TOC
- Groundwater – VOCs, SVOCs, Pesticides, PCBs, D/F, PFAS, Metals, pH



OU3 – Investigation

- Work Completed – Year 2
 - ✓ Bathymetric Survey
 - ✓ Collected surface and subsurface sediment sample from 12 locations
 - ✓ Collected six bulk surface sediment samples to extract and analyze porewater samples
 - ✓ Deployed sediment traps across four locations to collect suspended sediment
- Analyses: VOCs, pesticides, PCBs, metals, dioxin/furans, PFAS, TOC, 34 PAHs, AVS-SIM, pH, TPH-DRO, TPH-ORO, and O&G





What's Next – General Schedule

- Winter 2025 – Evaluation of Year 2 Data
 - OU1 & OU2 Technical Memorandums
 - Prepare Groundwater Monitoring Program
 - Bedrock aquifer need assessment
- Spring 2026
 - Sediment trap collection
 - Surface water sampling
 - Groundwater sampling
- Summer 2026
 - OU3 Technical Memorandum
 - Preparation of OU1 Remedial Investigation

Agency Contacts

- **Nilia Moberly Green**

USEPA Remedial Project Manager

green.nilia@epa.gov

312-353-6713

- **Megan Cynar**

EGLE Superfund Project Manager

cynarm@michigan.gov

517-256-2681

- **McLouth Steel Websites**

- CAG home page - <https://mclouthsteelcag.org/>

- EPA Superfund page - <https://www.epa.gov/superfund/mclouth-steel>



McLouth Steel RI/FS Update

Community Advisory Group Meeting

February 12, 2026

Christopher Vandegrift, Project Manager, CDM Smith

Nilia Moberly Green, Remedial Project Manager, USEPA

Megan Cynar, Superfund Project Manager, EGLE

